



**YEAR**  
WARRANTY



# CUPRA TERRAMAR

EXPLORE

CONFIGURE



# THE CUPRA TERRAMAR

THE NEW HERO OF A NEW ERA.

WHERE PRECISION, SPEED AND  
INNOVATION DRIVE SUCCESS.

A HIGHLY EMOTIONAL, SPORTY SUV  
THAT EMBRACES CUPRA'S NEW DNA.

[FIND A RETAILER](#)

[TEST DRIVE](#)

[FINANCE OFFERS](#)





# SELECT YOUR ENGINE

|             |        |                               | CO2 WLTP | Fuel Economy WLTP | NOx        | VRT Rate | Annual Motor Tax | RRP     | ROTR    |
|-------------|--------|-------------------------------|----------|-------------------|------------|----------|------------------|---------|---------|
| TERRAMAR V1 | KP1BNZ | Terramar 1.5 eTSI 150hp DSG   | 136 g/km | 6.0 l/100km       | 16.9 mg/km | 20.00 %  | €210             | €47,060 | €48,060 |
|             | KP1BOS | Terramar 2.0TSI 204hp DSG 4WD | 171g/km  | 7.5l/100km        | 20.4mg/km  | 35.00%   | €600             | €52,625 | €53,625 |
|             | KP1B8Y | Terramar eHYBRID 204hp DSG    | 36 g/km  | 0.4 l/100km       | 6.1 mg/km  | 7.00 %   | €140             | €49,140 | €50,140 |
| TERRAMAR V2 | KP1BNZ | Terramar 1.5 eTSI 150hp DSG   | 136 g/km | 6.1 l/100km       | 16.9 mg/km | 20.00 %  | €210             | €48,670 | €49,670 |
|             | KP1BOS | Terramar 2.0TSI 204hp DSG 4WD | 171g/km  | 7.5l/100km        | 20.4mg/km  | 35.00%   | €600             | €54,550 | €55,550 |
|             | KP1B8Y | Terramar eHYBRID 204hp DSG    | 36 g/km  | 0.4 l/100km       | 6.1 mg/km  | 7.00 %   | €140             | €50,445 | €51,455 |
| VZ          | KP1C1Y | Terramar VZ eHYBRID 272hp DSG | 37 g/km  | 0.4 l/100km       | 8.1 mg/km  | 7.00 %   | €140             | €51,855 | €52,855 |
|             | KP1CYS | Terramar VZ 2.0TSI 265hp 4WD  | 191 g/km | 8.4 l/100km       | 36.6 mg/km | 41.00 %  | €790             | €57,150 | €58,150 |

Optional extras and Irish standard equipment may have an effect on the CO2, NOx and Fuel Economy figures. The CO2, NOx & Fuel Economy figures are the official figures obtained from tests under standardised EU test conditions. Pricing effective as of: 01.01.2026. Subject to change.  
 ROTR: Recommended on the road price is RRP including delivery charges of €1,000 as recommended by CUPRA Ireland. Please note every effort has been made to ensure the contents of this publication (including RRP, CO2, fuel consumption and technical information) were accurate and up-to-date at the time of publishing. CUPRA Ireland reserves the right to change specification, prices and withdraw products from sale without notice. Any such alternations will be notified to CUPRA Retailers at the earliest opportunity. Please consult your local CUPRA retailer for the latest product information.

# COLOUR

PREMIUM METALLIC

DARK VOID

V1 V2 VZ



METALLIC

COSMO BLUE

V1 V2 VZ



MIDNIGHT BLACK

V1 V2 VZ



NON - METALLIC

FIORD BLUE

V1 V2 VZ



MATT

GLACIAL WHITE

V1 V2 VZ



TIMANFAYA GREY

V1 V2 VZ



CENTURY BRONZE

V1 V2 VZ



PAINT

Standard   
Optional 



# WHEELS



COSMIC COPPER (Z9E) V2 VZ  
19" MACHINED SPORT BLACK MATT/COOPER



HADRON COPPER\* (Z0E) V2 VZ  
20" MACHINED SPORT BLACK MATT / COPPER



ATOMIC V1 V2  
18" MACHINED SPORT BLACK MATT



SPECTRUM (Z9R) V2 VZ (2.0TS)  
19" MACHINED SPORT BLACK MATT / SILVER



GRAVITY (Z0B) V2 VZ  
20" MACHINED SPORT BLACK MATT / SILVER



COSMIC V2 VZ (e-Hybrid)  
18" MACHINED SPORT BLACK MATT/



HADRON (Z0A) V2 VZ  
20" MACHINED SPORT BLACK MATT / SILVER



VORTEX\*\* (Z0C) V2 VZ  
20" MACHINED SPORT BLACK MATT / COPPER

## WHEELS

Standard ■  
Optional ■

\*Not available for KP1BNZ & KP1BCS | \*\* For KP1CYS Requires Performance Tyres

# INTERIORS

DEEP OCEAN BUCKET - HM



V1 V2 VZ

MOON LIGHT DINAMICA - YA+PS2



V2 VZ

HIGH CANYON LEATHER SEATS - UD+PR2



V2 VZ





## STANDARD EQUIPMENT

### TERRAMAR V1

| Model                          | RRP     |
|--------------------------------|---------|
| Terramar 1.5 eTSI 150hp DSG    | €47,060 |
| Terramar 2.0 TSI 204hp DSG 4WD | €52,625 |
| Terramar eHYBRID 204hp DSG     | €49,140 |

## EXTERIOR

- *ATOMIC 18" Machined Alloy wheels in Sport black Matt*
- *LED Headlights w/ Signature*
- *Rear 3D LED lights w/Ceremony & Signature*
- *Front Fog Lamps with Cornering Function*
- *CUPRA sport suspension*
- *Door Panel Lights*
- *Aluminium Scuff Plates in Door Apertures*
- *Sports Bumpers*
- *Black Roof Rails*
- *CUPRA Welcome Light in Exterior Mirrors*

## TECHNOLOGY

- *Keyless Go*
- *10.25" Customisable Digital Cockpit*
- *12.9" Infotainment System w/ Illuminated Sliders*
- *9 Speakers*
- *DAB Radio*
- *CUPRA CONNECT*
- *Front & Rear Parking Sensors*
- *Rear View Camera*
- *Wireless Charging (Fast Charge)*
- *Voice Control*
- *Wireless Android Auto & Apple CarPlay*
- *Car 2x*

## SAFETY

- *Emergency Call*
- *Traffic Sign Recognition*
- *Lane Assist*
- *Attention & Drowsiness Alert*
- *Front Assist*
- *Intelligent Speed Assist*
- *Emergency Steering Support & Turn Assist*
- *Cruise Control*
- *Visual & Acoustic Seatbelt Reminder (Front & Rear)*
- *2x ISOFIX in Rear with Top Tethers & 1x ISOFIX Front Passenger Seat*
- *Daytime Running Light with Automatic Headlight Control*
- *Tyre Pressure Monitoring System*

## INTERIOR

- *Leather Multi-Function Sports Steering Wheel w/Satellite Buttons*
- *Progressive Steering*
- *Textile Bucket seats*
- *CUPRA Drive Profile*
- *Climatronic 1 Zone Air Conditioning (3 Zone for eHYBRID)*
- *Aluminium Pedals*
- *Black roof cloth*
- *Reading Lights (2x Front, 2x Rear)*
- *CUPRA Drive Profile Select*
- *USB-C (2x Front, 2x Rear)*
- *Front Centre Armrest*
- *Lumbar Adjustment Front Seats*
- *Height Adjustable Driver's Seat*
- *Auto-Dimming Interior Mirror*



## TECHNOLOGY

- Keyless Advanced
- 3-Zone Climate Control (Standard on eHybrid)
- Electric Tailgate & Virtual Pedal
- Towing Preparation

## SAFETY

- Alarm
- Adaptive Cruise Control

## INTERIOR

- Illuminated Scuff Plates in Door Apertures
- Heated Steering Wheel
- Seat Heaters in Front
- Interior Wraparound Smart Lighting

## EXTERIOR

- Power Exterior Heated Mirrors
- Dark Tinted Windows

## STANDARD EQUIPMENT

### TERRAMAR V2

(in addition to Terramar V1)

| Model                          | RRP     |
|--------------------------------|---------|
| Terramar 1.5 eTSI 150hp DSG    | €48,670 |
| Terramar 2.0 TSI 204hp DSG 4WD | €54,550 |
| Terramar eHYBRID 204hp DSG     | €50,445 |

Images are shown for representative purposes only and may contain optional extras.

**STANDARD EQUIPMENT  
TERRAMAR V2**





## STANDARD EQUIPMENT

### TERRAMAR VZ

(in addition to Terramar V1)

| Model                           | RRP     |
|---------------------------------|---------|
| Terramar VZ eHYBRID 272hp DSG   | €51,855 |
| Terramar VZ 2.0TSI 265hp 4Drive | €57,150 |

## EXTERIOR

- COSMIC 19" Machined Wheels in Sport Black Matt/ Silver
- Power Folding Heated Exterior Mirrors
- Illuminated Aluminium Scuff Plates in Door Apertures

## INTERIOR

- 3 Zone Climatronic Air Conditioning
- Electric Tailgate & Virtual Pedal
- Seat Heaters in Front
- Rear Centre Armrest
- Leather Multi-Function Sports Steering Wheel, Heated w/Satellite Buttons

## TECHNOLOGY

- DCC - Dynamic Chassis Control
- Keyless Advanced
- Smart Wraparound Interior Lighting
- Dark Tinted Windows

## SAFETY

- Alarm
- Adaptive Cruise Control



# E-HYBRID BENEFITS

## GO FURTHER FOR LESS

e-HYBRID can achieve up to 900\* kilometer per full tank of petrol making them more fuel efficient than pure combustion engines.

## BEST OF BOTH WORLDS

Available with our 204 HP & 272 HP e-HYBRID powertrain. Drive in three modes: All electric; pure TSI engine; or a combination of the two.

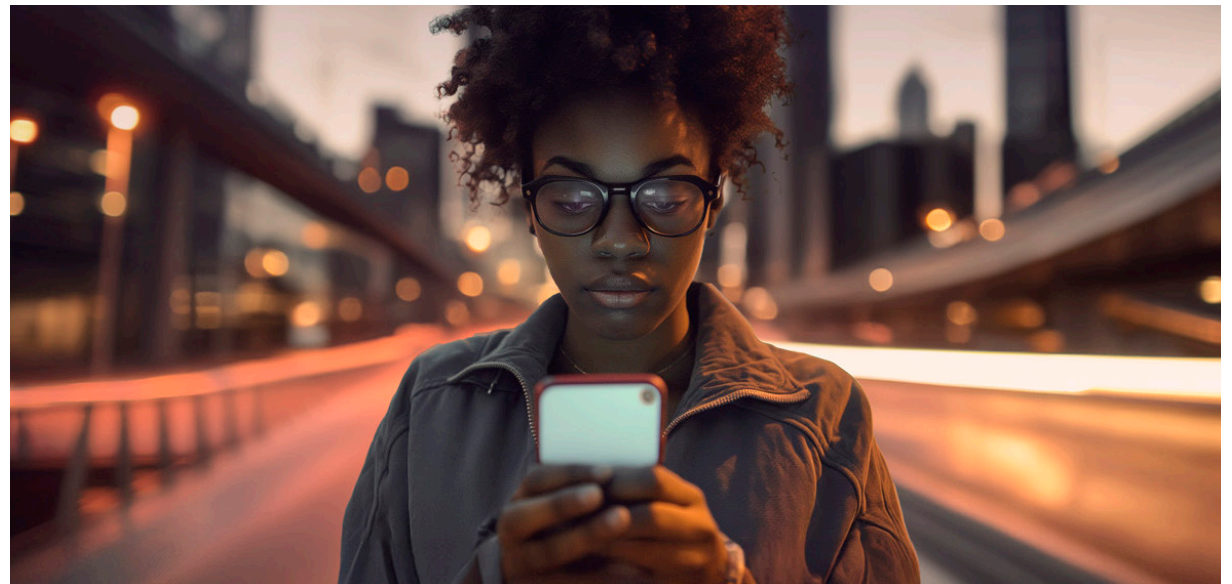
## FREEDOM TO MOVE

An all electric range of up to 123 kilometers allows for emission-free urban driving.

## EFFICIENT AND CONNECTED CHARGING

Charge with either a DC fast-charger or at home with an AC wallbox. Being able to charge from 10-80% on a 50KW fast charger in 26minutes whilst also monitoring activity via your smartphone with CUPRA CONNECT

CUPRA Terramar e-HYBRID comes with a MODE 2 (3-pin) as standard.





# OPTIONAL EQUIPMENT

|   |  |          | TERRAMAR V1 | TERRAMAR V2 | TERRAMAR VZ | RRP From* |
|---|--|----------|-------------|-------------|-------------|-----------|
| ALLOY WHEELS  | ATOMIC - 18 " Wheels Machined in Sport Black Matt  |          | •           | •           | -           | No Cost   |
|   | COSMIC - 19" Wheels Machined in Sport Black Matt/Silver  | Z9A      | -           | o           | •           | €709      |
|   | COSMIC COPPER - 19" Wheels Machined in Sport Black Matt/Copper   | Z9E      | -           | o           | -           | €946      |
|   |  |          | -           | -           | o           | €355      |
|   | SPECTRUM - 19" Wheels Machined in Sport Black Matt/Silver  | Z9R      | -           | o           | -           | €709      |
|   |  |          | -           | -           | o           | €355      |
|   | HADRON - 20" Wheels Machined in Sport Black Matt/Silver<br>[Not available on KP1BNZ or KP1BCS]   | Z0A      | -           | o           | -           | €1,170    |
|   |  |          | -           | -           | o           | €816      |
|   | HADRON COPPER - 20" Wheels Machined in Sport Black Matt/Copper<br>[Not available on KP1BNZ or KP1BCS]  | Z0E      | -           | o           | -           | €1,525    |
| -   |  |          | -           | o           | €1,170      |           |
| GRAVITY - 20" Wheels Machined in Sport Black Matt/Silver<br>[For KP1CYS requires Performance Tyres (ROZ)] | Z0B  | -        | o           | -           | €1,064      |           |
|   |  | -        | -           | o           | €710        |           |
| VORTEX - 20" Wheels Machined in Sport Black Matt/Copper<br>[For KP1CYS requires Performance Tyres (ROZ)]  | Z0C  | -        | o           | -           | €1,525      |           |
|   |  | -        | -           | o           | €1,170      |           |
|   |  |          | TERRAMAR V1 | TERRAMAR V2 | TERRAMAR VZ | RRP From* |
| PAINT FINISHES  | Soft Paint   | P        | •           | •           | •           | No Cost   |
|   | Metallic Paint   | M        | o           | o           | o           | €898      |
|   | Special Paint  | C        | o           | o           | o           | €1,300    |
|   | Matt Paint   | T        | o           | o           | o           | €2,837    |
|   |  |          | TERRAMAR V1 | TERRAMAR V2 | TERRAMAR VZ | RRP From* |
| LEATHER INTERIOR  | Deep Ocean Bucket Seats  | HM       | •           | •           | •           | No Cost   |
|   | Moon light<br>[Dinamica Bucket Seats, Power Adjustment for both Front Seats & Memory for Driver, Backlit Front & Rear Door Panels]                   | YA + PS2 | -           | o           | o           | €1,182    |
|   | High Canyon<br>[Leather Bucket Seats, Power Adjustment for both Front Seats & Memory for Driver, Backlit Front & Rear Door Panels]<br>(Requires WF2) | UD + PR2 | -           | o           | o           | €1,655    |

\*RRP From is based on the lowest available VRT rate for that model range, adding options to vehicles with higher VRT rates will cause options to increase in cost. Adding optional extras to vehicles can have an impact on the CO<sub>2</sub> & Fuel Consumption of the vehicle. This may in turn change the VRT payable on the vehicle and thus increase the Total Price. Please discuss the addition of options and their impact with your CUPRA Master within our CUPRA Network. Information & pricing subject to change without notice.

# OPTIONAL EQUIPMENT

|               |  | TERRAMAR V1 | TERRAMAR V2 | TERRAMAR VZ | RRP From* |        |
|---------------|--|-------------|-------------|-------------|-----------|--------|
| SPECIAL ITEMS | <b>Immersive by Sennheiser</b><br>- Sennheiser 12 Speaker System<br>- Acoustic Glass<br>(Requires PS2 or PR2)  | PA1         | -           | o           | o         | €579   |
|               | <b>Pure Performance</b><br>- Matrix HD Lights  | PP2         | -           | o           | o         | €1,064 |
|               | <b>Intelligent Drive</b><br>- Light Assist<br>- Intelligent Park Assist<br>- Trained Park Assist<br>- Top View Camera<br>- Side & Exit Assist<br>- Rear Traffic Alert<br>- Travel Assist<br>- Heads Up Display | WF2         | -           | o           | o         | €1,052 |
|               | <b>Skyline</b><br>- Panoramic Sunroof  | PTC         | -           | o           | o         | €1,300 |
|               | Towing Preparation [Wiring]  | PRP         | o           | ●           | o         | €177   |
|               | Dynamic Chassis Control<br>(Requires WF2)  | PDC         | -           | o           | ●         | €787   |
|               | Navigation System  | RN4         | -           | o           | o         | €778   |
|               | Emergency Spare Wheel [Not for eHYBRID Engines]  | PG6         | o           | o           | o         | €118   |
|               | e-Hybrid Mode 3 Charging Cable   | ***         | o           | o           | o         | €320   |





# CUPRA CONNECT

## FORGET WHERE YOU'VE PARKED?

Simply open the My CUPRA app and you will be able to easily locate your vehicle in cities or large parking areas.

The GPS coordinates will give you the exact address and you are then able to navigate to it through the easy to use map.

## IS MY CAR SECURE?

For those moments when you're unsure if you've locked your car.

Through the My CUPRA app, authorised users can see and control the lock status of the doors and boot.

## DETERMINE YOUR IDEAL TEMPERATURE

On those cold winter mornings, you'll no longer need to sit in your car while you wait for it to warm up and defrost.

With its remote temperature control, you can program the perfect temperature you want when sitting at the wheel, defrosting the windows in the process\*.

## WHEN IS MY SERVICE DUE?

You have enough things in your head to have to remember your next car service.

Activate automatic service scheduling and your chosen authorised service partner will contact you as soon as your vehicle detects the need of a service (inspection or relevant warning light).

## CUPRA CONNECT

CUPRA CONNECT enables access to multiple features and benefits including:

### VEHICLE STATUS

- Driving Data
- Vehicle Health Data

### COMFORT

- Parking Position
- Personalisation

### REMOTE & CONTROL

- Anti-Theft Alert
- Remote Lock & Unlock
- Remote Auxiliary heater

### SAFE & SECURE

- Service scheduling
- Customer care
- Breakdown call

### NAVIGATION\*\*

- Online POI search
- Online destination import
- Online route impact
- Online maps update
- Online traffic information
- Local hazard Information
- Online route calculation
- Dynamic POI (petrol+charging+parking information)

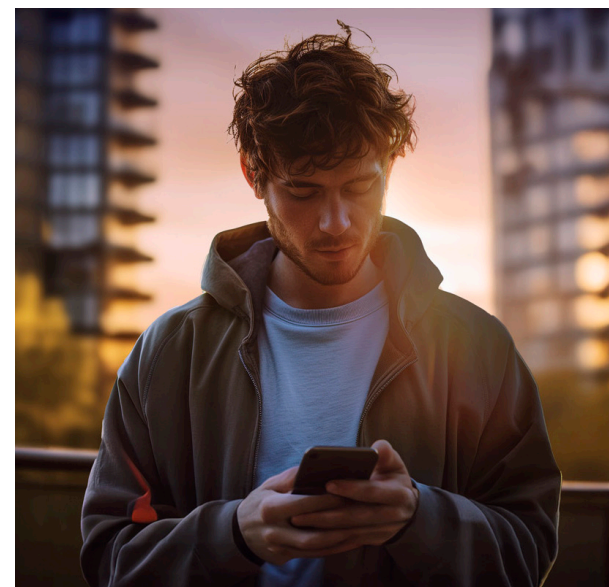
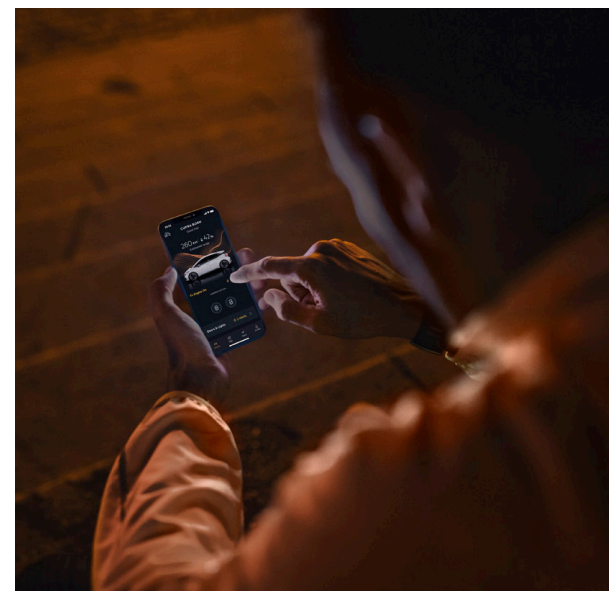
### DOWNLOAD CUPRA APP



APPSTORE



PLAY STORE



\*Feature only available on e-HYBRID and fully electric models. \*\*Only available if Navigation option is fitted.



# WARRANTIES

## FIVE-YEAR MANUFACTURE WARRANTY

All new CUPRA's registered on or after 01/01/2026 in Ireland, come with a five year/100,000 kilometer warranty, which protects your car against the failure of most mechanical and electrical components due to manufacturing defects. This comprises a two-year manufacturer's warranty with unlimited mileage, plus a further three years up to a maximum of 100,000 kilometer (whichever is soonest).

## THREE-YEAR PAINT WARRANTY

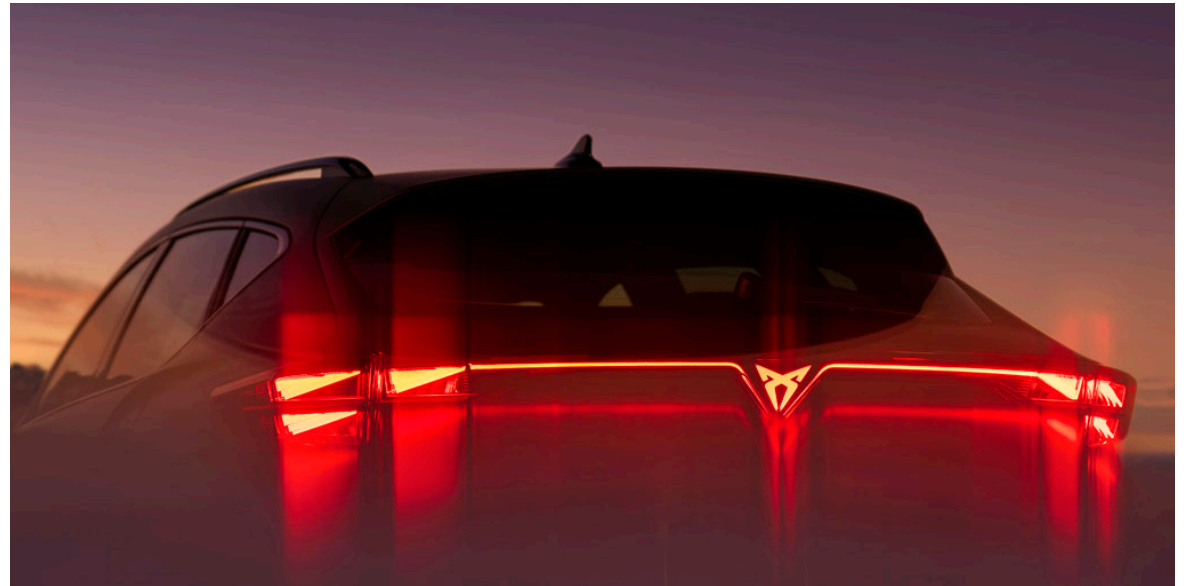
The paintwork of all models featured in this product guide are covered against manufacturing defects for a period of three years. Naturally, the vehicle must be cared for in compliance with the operating instructions which will be found in your vehicle handbook. Please consult your authorised CUPRA Retailer or repairer for full warranty details

## 12-YEAR BODY PROTECTION WARRANTY

The internal body sections and panels of the models featured in this product guide are covered against corrosion originating from internal cavities for 12 years. Naturally, the vehicle must be cared for in compliance with the operating instructions which will be found in your vehicle handbook. Please consult your authorised CUPRA Retailer or repairer for full warranty details.

## CUPRA ROADSIDE ASSISTANCE (INCLUDING EUROPEAN COVER)

Any new CUPRA purchased and registered in the Ireland from an authorised CUPRA Retailer, is covered free by CUPRA Assistance (including European cover) for roadside repairs or recovery to an authorised repairer for the duration of the vehicles warranty. Terms and conditions apply.



## BATTERY WARRANTY\*

The high voltage batteries and named components for plug-In hybrid vehicles (PHEV) are warranted against all defects in materials and workmanship for eight years or up to 160,000 kilometers.

A gradual reduction in battery energy content over time is a normal feature of high voltage battery and does not constitute a warrantable defect. For PHEVs, the battery energy content degradation warranty lasts for eight years or up to 160,000 kilometers, whichever comes first. Where the battery energy content of the high voltage battery is measured by a CUPRA authorised repairer and is found to be less than 70% during the warranty period, then it will be repaired or replaced under warranty subject to conditions. For full details, please go to the CUPRA Ireland website whichever comes first.

## CUPRA PARTS WARRANTY

CUPRA parts and accessories supplied after new vehicle delivery are covered by our 24 months parts warranty

\*Only available on e-HYBRID and fully electric models.





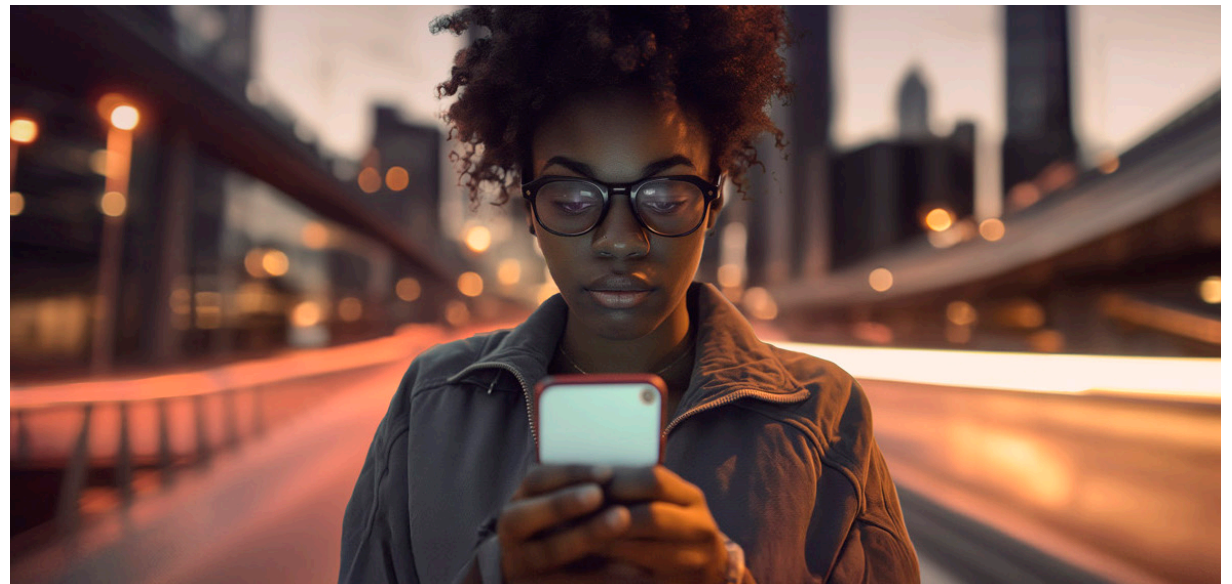
# CUPRA CARE

The CUPRA Terramar has a 5 year (100,000km)\* manufacturers warranty as standard. For further peace of mind, an optional CUPRA Care pack is available which takes care of the maintenance of your Terramar allowing you to enjoy the drive.

**For just €14.99 per month, the Terramar Care Pack Includes:**

- 3 Oil Change Service
- Brake Fluid Change
- Pollen Filter Replacement
- Complimentary Vehicle Health Check

**CONTACT YOUR PREFERRED CUPRA RETAILER SHOULD YOU WISH TO PURCHASE A CARE PACK**



\*CUPRA 5 Year Warranty is applicable for all cars registered from 01.01.2026

**CUPRA  
CARE BENEFITS**

# TECHNICAL SPECIFICATIONS - TERRAMAR

1.5 TSI 110kW 150hp MHEV(KP1BNZ) / 1.5 TSI 150kW 204hp PHEV(KP1B8Y)

| ENGINE               |                                       | 1.5 TSI 110kW 150hp mHEV (KP1BNZ) | 2.0 TSI 150kW 204hp mHEV (KP1BOS) | 1.5 TSI 150kW 204hp PHEV (KP1B8Y) |
|----------------------|---------------------------------------|-----------------------------------|-----------------------------------|-----------------------------------|
|                      | Cylinder/Valve (Total)                | 4/16                              | 4/16                              | 4/16                              |
|                      | Displacement (cc)                     | 1498                              | 1984                              | 1498                              |
|                      | Cylinder bore and stroke (mm)         | 74.5 / 85.9                       | 82.5/92.8                         | 74.5 / 85.9                       |
|                      | Compression ratio                     | 12                                | 12.2                              | 11.5                              |
|                      | Maximum power (kW (HP)/rpm)           | 110 (150)/ 5000-6000              | 150 (204)/ 4500-6000              | 150 (204)/ 4000-6000              |
|                      | Maximum torque (Nm/rpm)               | 250/1500-3500                     | 320/1500-4400                     | 350/850-4000                      |
|                      | Fuel supply system                    | TSI Direct Injection              | TSI Direct Injection              | TSI Direct Injection              |
|                      | Aspiration                            | Turbocharged                      | Turbocharged                      | Turbocharged                      |
|                      | Fuel type                             | Petrol (ROZ 95)                   | Petrol (ROZ 95)                   | Petrol (ROZ 95)                   |
| PERFORMANCE          | Maximum speed [km/h]                  | 205                               | 225                               | 205                               |
|                      | Acceleration 0-100 km/h (s)           | 9.3                               | 7.1                               | 8.3                               |
| TRANSMISSION         | Gearbox type                          | DSG (Automatic)                   | DSG (Automatic)                   | DSG (Automatic)                   |
|                      | Transmission of drive                 | Front Wheel Drive                 | Four Wheel Drive                  | Front Wheel Drive                 |
| ELECTRIC SYSTEM      | Battery Capacity [kWh]                | -                                 | -                                 | 25.8 (20 net)                     |
|                      | Battery Type                          | -                                 | -                                 | NMC                               |
|                      | Electric Range [km]                   | -                                 | -                                 | 119                               |
|                      | Charging Time (AC 11kW) 0-100% SoC    | -                                 | -                                 | 2 hrs 30 mins                     |
|                      | Charging Time (DC 50kW) 10-80% SoC    | -                                 | -                                 | 26 min                            |
| WEIGHTS & DIMENSIONS | Length / Width / Height [mm]          | 4519/1863/1584                    | 4519/1863/1584                    | 4519/1863/1584                    |
|                      | Wheelbase [mm]                        | 2681                              | 2681                              | 2681                              |
|                      | Front & rear track [mm]               | 1590/1580                         | 1590/1580                         | 1590/1580                         |
|                      | Boot capacity [l]                     | 642L/508L                         | 642L/508L                         | 490L/400L                         |
|                      | Fuel tank capacity [l]                | 55                                | 60                                | 45                                |
|                      | Max allowable weight [kg]             | 2180                              | 2280                              | 2410                              |
|                      | Max towing weight (unbraked) [kg]     | 750                               | 750                               | 750                               |
|                      | Max towing weight (braked - 12%) [kg] | 1800                              | 2200                              | 1800                              |



# TECHNICAL SPECIFICATIONS - Terramar VZ

1.5 TSI 200kW 272hp PHEV DSG(KP1C1Y) / 2.0 TSI 195kW 265hp DSG(KP1CYS)

ENGINE

|                               | 1.5 TSI 200kW 272hp (KP1C1Y) | 2.0 TSI 195kW 265hp (KP1CYS) |
|-------------------------------|------------------------------|------------------------------|
| Cylinder/Valve (Total)        | 4/16                         | 4/16                         |
| Displacement (cc)             | 1498                         | 1984                         |
| Cylinder bore and stroke (mm) | 74.5 / 85.9                  | 82.5 / 92.8                  |
| Compression ratio             | 11.5                         | 9.6                          |
| Maximum power (kW (HP)/rpm)   | 200 (272)/4750-6500          | 195(265)/5000-6500           |
| Maximum torque (Nm/rpm)       | 400/850-4750                 | 400/1650-4350                |
| Fuel supply system            | TSI Direct Injection         | TSI Direct Injection         |
| Aspiration                    | Turbocharged                 | Turbocharged                 |
| Fuel type                     | Petrol (ROZ 95)              | Petrol (ROZ 95)              |

PERFORMANCE

|                             |     |     |
|-----------------------------|-----|-----|
| Maximum speed [km/h]        | 215 | 243 |
| Acceleration 0-100 km/h (s) | 7.3 | 5.9 |

TRANSMISSION

|                       |                   |                   |
|-----------------------|-------------------|-------------------|
| Gearbox type          | DSG (Automatic)   | DSG (Automatic)   |
| Transmission of drive | Front Wheel Drive | Front Wheel Drive |

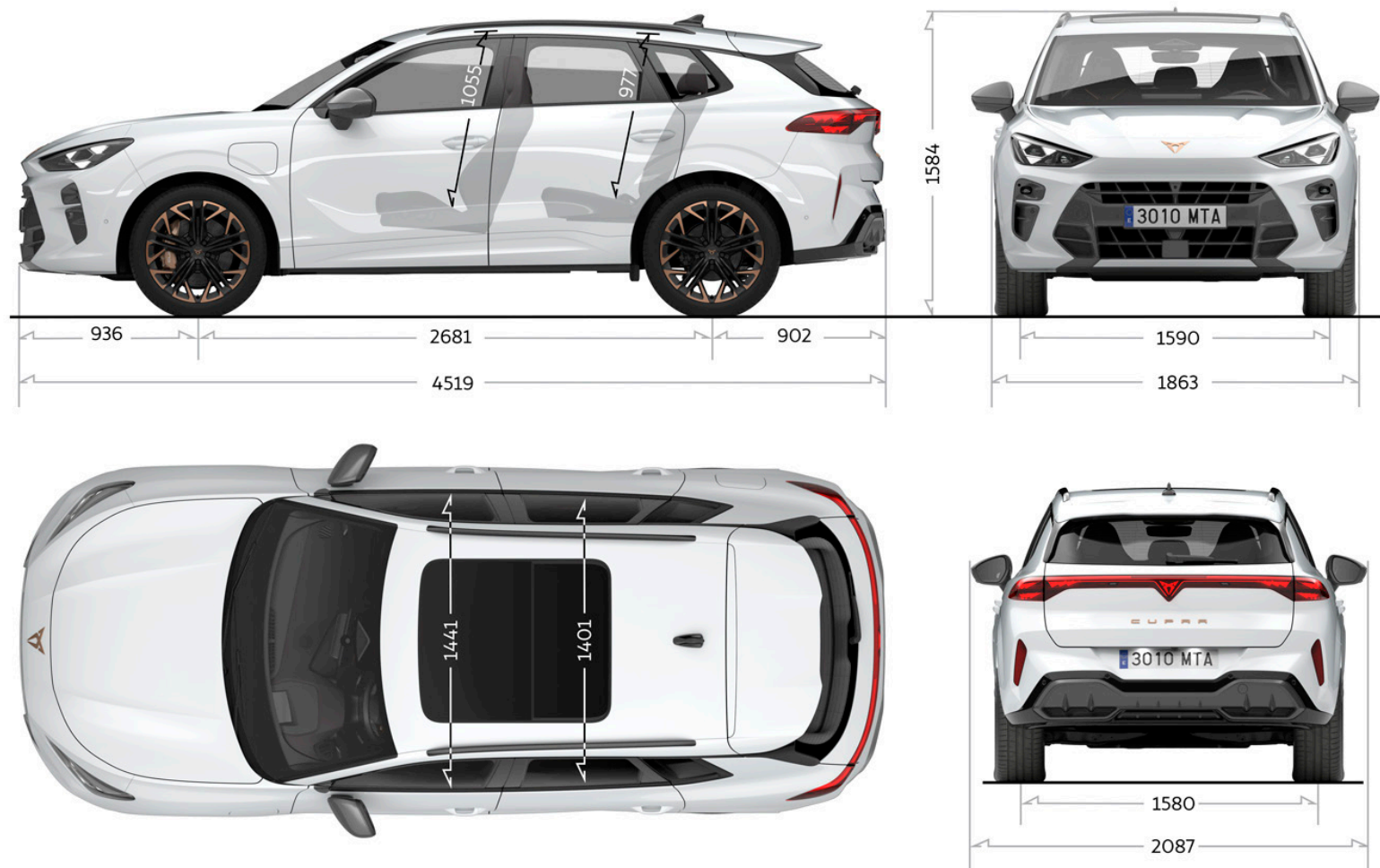
ELECTRIC SYSTEM

|                                    |               |   |
|------------------------------------|---------------|---|
| Battery Capacity [kWh]             | 25.8 (20 net) | - |
| Battery Type                       | NMC           | - |
| Electric Range [km]                | 118           | - |
| Charging Time (AC 11kW) 0-100% SoC | 2 hrs 30 mins | - |
| Charging Time (DC 50kW) 10-80% SoC | 26 min        | - |

WEIGHTS & DIMENSIONS

|                                       |                |                |
|---------------------------------------|----------------|----------------|
| Length / Width / Height [mm]          | 4519/1863/1584 | 4519/1863/1584 |
| Wheelbase [mm]                        | 2681           | 2681           |
| Front & rear track [mm]               | 1590/1580      | 1590/1580      |
| Boot capacity [l]                     | 490L/400L      | 602L/508L      |
| Fuel tank capacity [l]                | 45             | 60             |
| Max allowable weight [kg]             | 2420           | 2290           |
| Max towing weight (unbraked) [kg]     | 750            | 750            |
| Max towing weight (braked - 12%) [kg] | 2000           | 2200           |

## Dimensional Drawing







**EXPLORE**

**FIND A RETAILER**

**TEST DRIVE**

**FINANCE OFFERS**

**CONFIGURE**

CUPRA is committed to a policy of continuous product development and reserves the right to make changes to specifications, colours and prices without notice. The information in this product guide can therefore be given as guidance only. While CUPRA makes every effort to ensure that specifications are accurate at the time of publication, you should always check with your authorised CUPRA Partner for the latest information. Due to limitations of the printing process the colours reproduced in this guide may vary slightly from the actual paint colours and material.