



**YEAR**  
WARRANTY



# CUPRA TERRAMAR

EXPLORE

CONFIGURE



# THE CUPRA TERRAMAR

THE NEW HERO OF A NEW ERA.

WHERE PRECISION, SPEED AND  
INNOVATION DRIVE SUCCESS.

A HIGHLY EMOTIONAL, SPORTY SUV  
THAT EMBRACES CUPRA'S NEW DNA.

[FIND A RETAILER](#)

[TEST DRIVE](#)

[FINANCE OFFERS](#)





## SELECT YOUR ENGINE

			CO2 WLTP	Fuel Economy WLTP	NOx	VRT Rate	Annual Motor Tax	RRP	ROTR
TERRAMAR V1	KP1BNZ	Terramar 1.5 eTSI 150hp DSG	136 g/km	6.0 l/100km	16.9 mg/km	20.00 %	€210	€47,060	€48,060
	KP1BOS	Terramar 2.0TSI 204hp DSG 4WD	171g/km	7.5l/100km	20.4mg/km	35.00%	€600	€52,625	€53,625
	KP1B8Y	Terramar eHYBRID 204hp DSG	36 g/km	0.4 l/100km	6.1 mg/km	7.00 %	€140	€49,140	€50,140
TERRAMAR V2	KP1BNZ	Terramar 1.5 eTSI 150hp DSG	136 g/km	6.1 l/100km	16.9 mg/km	20.00 %	€210	€48,670	€49,670
	KP1BOS	Terramar 2.0TSI 204hp DSG 4WD	171g/km	7.5l/100km	20.4mg/km	35.00%	€600	€54,550	€55,550
	KP1B8Y	Terramar eHYBRID 204hp DSG	36 g/km	0.4 l/100km	6.1 mg/km	7.00 %	€140	€50,445	€51,455
VZ	KP1C1Y	Terramar VZ eHYBRID 272hp DSG	37 g/km	0.4 l/100km	8.1 mg/km	7.00 %	€140	€51,855	€52,855
	KP1CYS	Terramar VZ 2.0TSI 265hp 4WD	191 g/km	8.4 l/100km	36.6 mg/km	41.00 %	€790	€57,150	€58,150

Optional extras and Irish standard equipment may have an effect on the CO2, NOx and Fuel Economy figures. The CO2, NOx & Fuel Economy figures are the official figures obtained from tests under standardised EU test conditions. Pricing effective as of: 01.01.2026. Subject to change.  
ROTR: Recommended on the road price is RRP including delivery charges of €1,000 as recommended by CUPRA Ireland. Please note every effort has been made to ensure the contents of this publication (including RRP, CO2, fuel consumption and technical information) were accurate and up-to-date at the time of publishing. CUPRA Ireland reserves the right to change specification, prices and withdraw products from sale without notice. Any such alternations will be notified to CUPRA Retailers at the earliest opportunity. Please consult your local CUPRA retailer for the latest product information.

# COLOUR

PREMIUM METALLIC

DARK VOID

V1 V2 VZ



METALLIC

COSMO BLUE

V1 V2 VZ



MIDNIGHT BLACK

V1 V2 VZ



GLACIAL WHITE

V1 V2 VZ



TIMANFAYA GREY

V1 V2 VZ



NON - METALLIC

FIORD BLUE

V1 V2 VZ



MATT

CENTURY BRONZE

V1 V2 VZ



ENCELADUS GREY

V1 V2 VZ



PAINT

Standard   
Optional 



# WHEELS



COSMIC COOPER (Z9E)  
19" MACHINED SPORT BLACK MATT/COOPER

V2 V2



HADRON COOPER\* (Z0E)  
20" MACHINED SPORT BLACK MATT / COPPER

V2 V2



ATOMIC  
18" MACHINED SPORT BLACK MATT

V1 V2



SPECTRUM (Z9R)  
19" MACHINED SPORT BLACK MATT / SILVER

V2 V2



GRAVITY (Z0B)  
20" MACHINED SPORT BLACK MATT / SILVER

V2 V2



COSMIC  
18" MACHINED SPORT BLACK MATT/SILVER

V2 V2



HADRON (Z0A)  
20" MACHINED SPORT BLACK MATT / SILVER

V2 V2



VORTEX\*\* (Z0C)  
20" MACHINED SPORT BLACK MATT /  
COPPER

V2 V2

## WHEELS

Standard ■  
Optional ■

\*Not available for KP1BNZ & KP1BCS | \*\* For KP1CYS Requires Performance Tyres

# INTERIORS

DEEP OCEAN BUCKET - HM



V1 V2 VZ

MOON LIGHT DINAMICA - YA+PS2



V2 VZ

HIGH CANYON LEATHER SEATS - UD+PR2



V2 VZ





## STANDARD EQUIPMENT

### TERRAMAR V1

Model	RRP
Terramar 1.5 eTSI 150hp DSG	€47,060
Terramar 2.0 TSI 204hp DSG 4WD	€52,625
Terramar eHYBRID 204hp DSG	€49,140

## EXTERIOR

- *ATOMIC 18" Machined Alloy wheels in Sport black Matt*
- *LED Headlights w/ Signature*
- *Rear 3D LED lights w/Ceremony & Signature*
- *Front Fog Lamps with Cornering Function*
- *CUPRA sport suspension*
- *Door Panel Lights*
- *Aluminium Scuff Plates in Door Apertures*
- *Sports Bumpers*
- *Black Roof Rails*
- *CUPRA Welcome Light in Exterior Mirrors*

## TECHNOLOGY

- *Keyless Go*
- *10.25" Digital Cockpit*
- *12.9" Infotainment System w/ Illuminated Sliders*
- *9 Speakers*
- *DAB Radio*
- *CUPRA CONNECT*
- *Front & Rear Parking Sensors*
- *Rear View Camera*
- *Wireless Charging (Fast Charge)*
- *Voice Control*
- *Wireless Android Auto & Apple CarPlay*
- *Car 2x*

## SAFETY

- *Emergency Call*
- *Traffic Sign Recognition*
- *Lane Assist*
- *Attention & Drowsiness Alert*
- *Front Assist*
- *Intelligent Speed Assist*
- *Emergency Steering Support & Turn Assist*
- *Cruise Control*
- *Visual & Acoustic Seatbelt Reminder (Front & Rear)*
- *2x ISOFIX in Rear with Top Tethers & 1x ISOFIX Front Passenger Seat*
- *Daytime Running Light with Automatic Headlight Control*
- *Tyre Pressure Monitoring System*

## INTERIOR

- *Leather Multi-Function Sports Steering Wheel w/Satellite Buttons*
- *Progressive Steering*
- *Textile Bucket seats*
- *CUPRA Drive Profile*
- *Climatronic 1 Zone Air Conditioning (3 Zone for eHYBRID)*
- *Aluminium Pedals*
- *Black roof cloth*
- *Reading Lights (2x Front, 2x Rear)*
- *CUPRA Drive Profile Select*
- *USB-C (2x Front, 2x Rear)*
- *Front Centre Armrest*
- *Lumbar Adjustment Front Seats*
- *Height Adjustable Driver's Seat*
- *Auto-Dimming Interior Mirror*



## TECHNOLOGY

- Keyless Advanced
- 3-Zone Climate Control (Standard on eHybrid)
- Electric Tailgate & Virtual Pedal
- Towing Preparation

## SAFETY

- Alarm
- Adaptive Cruise Control

## INTERIOR

- Illuminated Scuff Plates in Door Apertures
- Heated Steering Wheel
- Seat Heaters in Front
- Interior Wraparound Smart Lighting

## EXTERIOR

- Power Exterior Heated Mirrors
- Dark Tinted Windows

## STANDARD EQUIPMENT

### TERRAMAR V2

(in addition to Terramar V1)

Model	RRP
Terramar 1.5 eTSI 150hp DSG	€48,670
Terramar 2.0 TSI 204hp DSG 4WD	€54,550
Terramar eHYBRID 204hp DSG	€50,445

Images are shown for representative purposes only and may contain optional extras.

**STANDARD EQUIPMENT  
TERRAMAR V2**





## STANDARD EQUIPMENT

### TERRAMAR VZ

(in addition to Terramar V1)

Model	RRP
Terramar VZ eHYBRID 272hp DSG	€51,855
Terramar VZ 2.0TSI 265hp 4Drive	€57,150

## EXTERIOR

- COSMIC 19" Machined Wheels in Sport Black Matt/ Silver
- Power Folding Heated Exterior Mirrors
- Illuminated Aluminium Scuff Plates in Door Apertures

## INTERIOR

- 3 Zone Climatronic Air Conditioning
- Electric Tailgate & Virtual Pedal
- Seat Heaters in Front
- Rear Centre Armrest
- Leather Multi-Function Sports Steering Wheel, Heated w/Satellite Buttons

## TECHNOLOGY

- DCC - Dynamic Chassis Control
- Keyless Advanced
- Smart Wraparound Interior Lighting
- Dark Tinted Windows

## SAFETY

- Alarm
- Adaptive Cruise Control



# E-HYBRID BENEFITS

## GO FURTHER FOR LESS

e-HYBRID can achieve up to 900\* kilometer per full tank of petrol making them more fuel efficient than pure combustion engines.

## BEST OF BOTH WORLDS

Available with our 204 HP & 272 HP e-HYBRID powertrain. Drive in three modes: All electric; pure TSI engine; or a combination of the two.

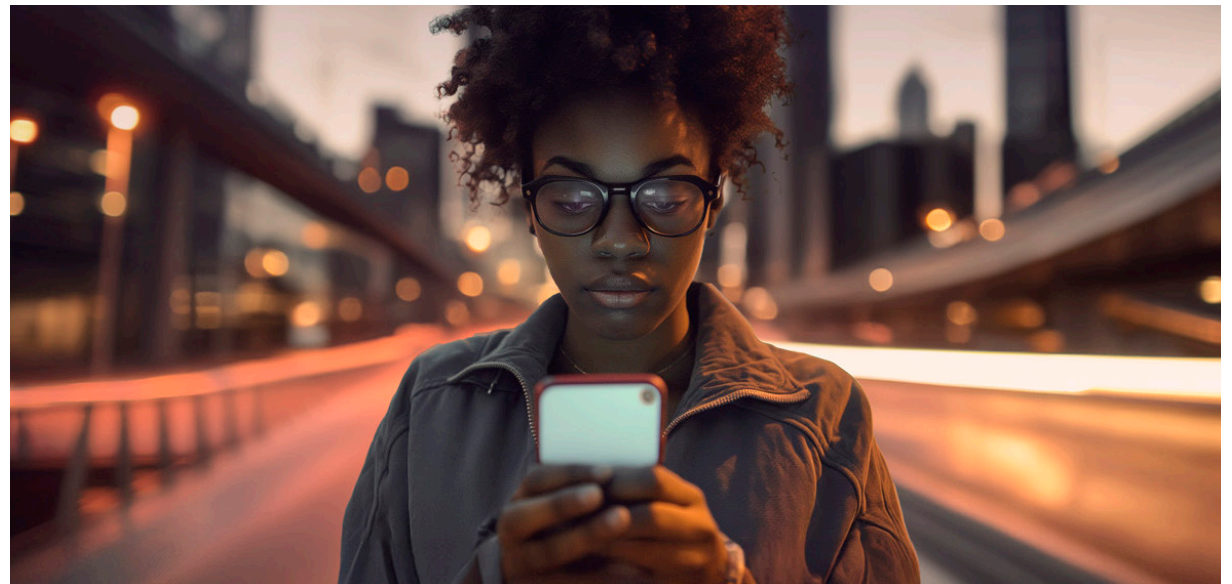
## FREEDOM TO MOVE

An all electric range of up to 123 kilometers allows for emission-free urban driving.

## EFFICIENT AND CONNECTED CHARGING

Charge with either a DC fast-charger or at home with an AC wallbox. Being able to charge from 10-80% on a 50KW fast charger in 26minutes whilst also monitoring activity via your smartphone with CUPRA CONNECT

CUPRA Terramar e-HYBRID comes with a MODE 2 (3-pin) as standard.





# OPTIONAL EQUIPMENT

			TERRAMAR V1	TERRAMAR V2	TERRAMAR VZ	RRP From*
ALLOY WHEELS	ATOMIC - 18 " Wheels Machined in Sport Black Matt		•	•	-	No Cost
	COSMIC - 19" Wheels Machined in Sport Black Matt/Silver	Z9A	-	o	•	€709
	COSMIC COPPER - 19" Wheels Machined in Sport Black Matt/Copper	Z9E	-	o	-	€946
			-	-	o	€355
	SPECTRUM - 19" Wheels Machined in Sport Black Matt/Silver	Z9R	-	o	-	€709
			-	-	o	€355
	HADRON - 20" Wheels Machined in Sport Black Matt/Silver [Not available on KP1BNZ or KP1BCS]	Z0A	-	o	-	€1,170
			-	-	o	€816
	HADRON COPPER - 20" Wheels Machined in Sport Black Matt/Copper [Not available on KP1BNZ or KP1BCS]	Z0E	-	o	-	€1,525
-			-	o	€1,170	
GRAVITY - 20" Wheels Machined in Sport Black Matt/Silver [For KP1CYS requires Performance Tyres (ROZ)]	Z0B	-	o	-	€1,064	
		-	-	o	€710	
VORTEX - 20" Wheels Machined in Sport Black Matt/Copper [For KP1CYS requires Performance Tyres (ROZ)]	Z0C	-	o	-	€1,525	
		-	-	o	€1,170	
			TERRAMAR V1	TERRAMAR V2	TERRAMAR VZ	RRP From*
PAINT FINISHES	Soft Paint	P	•	•	•	No Cost
	Metallic Paint	M	o	o	o	€898
	Special Paint	C	o	o	o	€1,300
	Matt Paint	T	o	o	o	€2,837
			TERRAMAR V1	TERRAMAR V2	TERRAMAR VZ	RRP From*
LEATHER INTERIOR	Deep Ocean Bucket Seats	HM	•	•	•	No Cost
	Moon light [Dinamica Bucket Seats, Power Adjustment for both Front Seats & Memory for Driver, Backlit Front & Rear Door Panels]	YA + PS2	-	o	o	€1,182
	High Canyon [Leather Bucket Seats, Power Adjustment for both Front Seats & Memory for Driver, Backlit Front & Rear Door Panels] *Requires Digital Drive Pack (PN1)	UD + PR2	-	o	o	€1,655

\*RRP From is based on the lowest available VRT rate for that model range, adding options to vehicles with higher VRT rates will cause options to increase in cost. Adding optional extras to vehicles can have an impact on the CO<sub>2</sub> & Fuel Consumption of the vehicle. This may in turn change the VRT payable on the vehicle and thus increase the Total Price. Please discuss the addition of options and their impact with your CUPRA Master within our CUPRA Network. Information & pricing subject to change without notice.

# OPTIONAL EQUIPMENT

		TERRAMAR V1	TERRAMAR V2	TERRAMAR VZ	RRP From*
SPECIAL ITEMS	<b>Immersive by Sennheiser</b> - Sennheiser 12 Speaker System - Acoustic Glass	PA1	-	o	€579
	<b>Pure Performance</b> - Matrix HD Lights - Dynamic Chassis Control	PP1	-	o	€1,773
	<b>Pure Performance</b> - Matrix HD Lights	PP2	-	o	€1,064
	<b>Intelligent Drive</b> - Light Assist - Intelligent Park Assist - Trained Park Assist - Top View Camera - Side & Exit Assist - Rear Traffic Alert - Travel Assist	WF1	-	o	€1,052
	<b>Digital Drive</b> - Navigation System - 10.25" Customisable Digital Cockpit - AR HUD Only in combination with PS2 & PR2	PN1	-	o	€1005
	<b>Skyline</b> - Panoramic Sunroof	PTC	-	o	€1,300
	Towing Preparation [Wiring]	PRP	o	•	€177
	Emergency Spare Wheel [Not for eHYBRID Engines]	PG6	o	o	€118
	e-Hybrid Mode 3 Charging Cable	***	o	o	€320





# CUPRA CONNECT

## FORGET WHERE YOU'VE PARKED?

Simply open the My CUPRA app and you will be able to easily locate your vehicle in cities or large parking areas.

The GPS coordinates will give you the exact address and you are then able to navigate to it through the easy to use map.

## IS MY CAR SECURE?

For those moments when you're unsure if you've locked your car.

Through the My CUPRA app, authorised users can see and control the lock status of the doors and boot.

## DETERMINE YOUR IDEAL TEMPERATURE

On those cold winter mornings, you'll no longer need to sit in your car while you wait for it to warm up and defrost.

With its remote temperature control, you can program the perfect temperature you want when sitting at the wheel, defrosting the windows in the process\*.

## WHEN IS MY SERVICE DUE?

You have enough things in your head to have to remember your next car service.

Activate automatic service scheduling and your chosen authorised service partner will contact you as soon as your vehicle detects the need of a service (inspection or relevant warning light).

## CUPRA CONNECT

CUPRA CONNECT enables access to multiple features and benefits including:

### VEHICLE STATUS

- Driving Data
- Vehicle Health Data

### COMFORT

- Parking Position
- Personalisation

### REMOTE & CONTROL

- Horn & Turn Signals
- Anti-Theft Alert
- Remote Lock & Unlock
- Remote Auxiliary heater

### SAFE & SECURE

- Service scheduling
- Customer care
- Breakdown call

### NAVIGATION\*\*

- Online POI search
- Online destination import
- Online route impact
- Online maps update
- Online traffic information
- Local hazard Information
- Online route calculation
- Dynamic POI (petrol+charging+parking information)

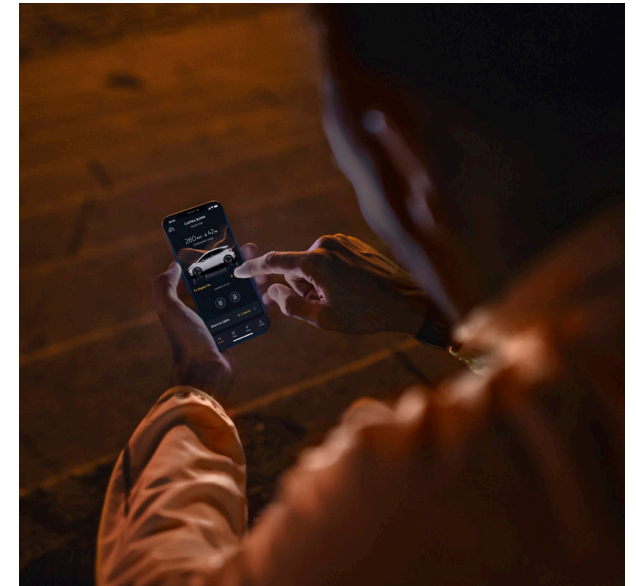
### DOWNLOAD CUPRA APP



APPSTORE



PLAY STORE



\*Feature only available on e-HYBRID and fully electric models. \*\*Only available if Navigation option is fitted.



# WARRANTIES

## FIVE-YEAR MANUFACTURE WARRANTY

All new CUPRA's registered on or after 01/01/2026 in Ireland, come with a five year/100,000 kilometer warranty, which protects your car against the failure of most mechanical and electrical components due to manufacturing defects. This comprises a two-year manufacturer's warranty with unlimited mileage, plus a further three years up to a maximum of 100,000 kilometer (whichever is soonest).

## THREE-YEAR PAINT WARRANTY

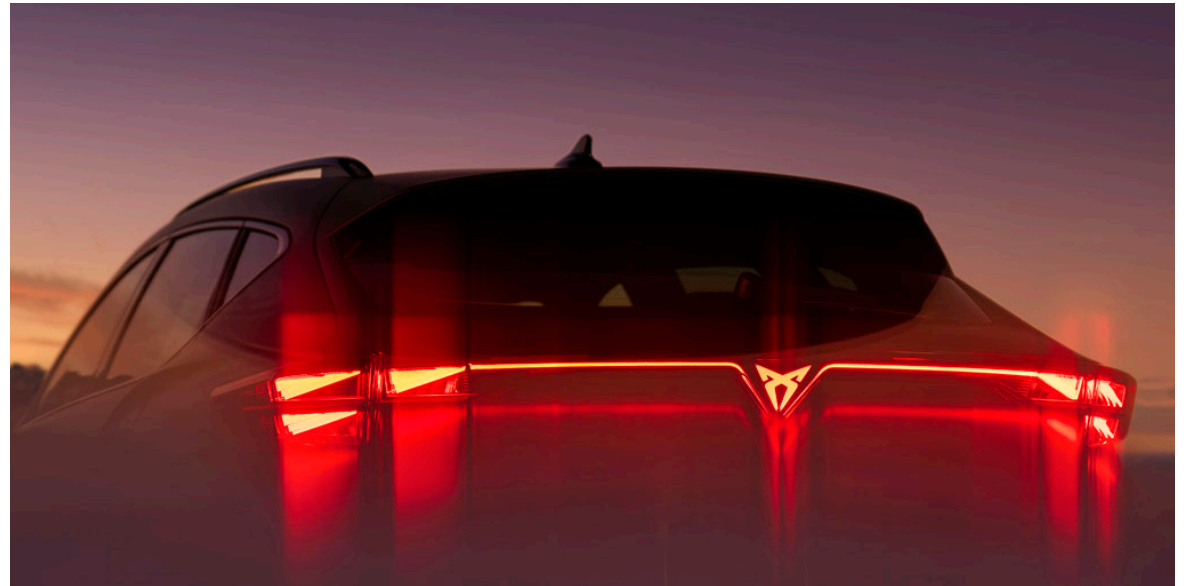
The paintwork of all models featured in this product guide are covered against manufacturing defects for a period of three years. Naturally, the vehicle must be cared for in compliance with the operating instructions which will be found in your vehicle handbook. Please consult your authorised CUPRA Retailer or repairer for full warranty details

## 12-YEAR BODY PROTECTION WARRANTY

The internal body sections and panels of the models featured in this product guide are covered against corrosion originating from internal cavities for 12 years. Naturally, the vehicle must be cared for in compliance with the operating instructions which will be found in your vehicle handbook. Please consult your authorised CUPRA Retailer or repairer for full warranty details.

## CUPRA ROADSIDE ASSISTANCE (INCLUDING EUROPEAN COVER)

Any new CUPRA purchased and registered in the Ireland from an authorised CUPRA Retailer, is covered free by CUPRA Assistance (including European cover) for roadside repairs or recovery to an authorised repairer for the duration of the vehicles warranty. Terms and conditions apply.



## BATTERY WARRANTY\*

The high voltage batteries and named components for plug-In hybrid vehicles (PHEV) are warranted against all defects in materials and workmanship for eight years or up to 160,000 kilometers.

A gradual reduction in battery energy content over time is a normal feature of high voltage battery and does not constitute a warrantable defect. For PHEVs, the battery energy content degradation warranty lasts for eight years or up to 160,000 kilometers, whichever comes first. Where the battery energy content of the high voltage battery is measured by a CUPRA authorised repairer and is found to be less than 70% during the warranty period, then it will be repaired or replaced under warranty subject to conditions. For full details, please go to the CUPRA Ireland website whichever comes first.

## CUPRA PARTS WARRANTY

CUPRA parts and accessories supplied after new vehicle delivery are covered by our 24 months parts warranty

\*Only available on e-HYBRID and fully electric models.



# TECHNICAL SPECIFICATIONS - TERRAMAR

1.5 TSI 110kW 150hp MHEV(KP1BNZ) / 1.5 TSI 150kW 204hp PHEV(KP1B8Y)

ENGINE		1.5 TSI 110kW 150hp mHEV (KP1BNZ)	1.5 TSI 150kW 204hp PHEV (KP1B8Y)
	Cylinder/Valve (Total)	4/16	4/16
	Displacement (cc)	1498	1498
	Cylinder bore and stroke (mm)	74.5 / 85.9	74.5 / 85.9
	Compression ratio	12	11.5
	Maximum power (kW (HP)/rpm)	110 (150)/ 5000-6000	150 (204)/ 4000-6000
	Maximum torque (Nm/rpm)	250/1500-3500	350/850-4000
	Fuel supply system	TSI Direct Injection	TSI Direct Injection
	Aspiration	Turbocharged	Turbocharged
	Fuel type	Petrol (ROZ 95)	Petrol (ROZ 95)
PERFORMANCE	Maximum speed [km/h]	205	205
	Acceleration 0-100 km/h (s)	9.3	8.3
TRANSMISSION	Gearbox type	DSG (Automatic)	DSG (Automatic)
	Transmission of drive	Front Wheel Drive	Front Wheel Drive
ELECTRIC SYSTEM	Battery Capacity [kWh]	-	25.8 (20 net)
	Battery Type	-	NMC
	Electric Range [km]	-	119
	Charging Time (AC 11kW) 0-100% SoC	-	2 hrs 30 mins
	Charging Time (DC 50kW) 10-80% SoC	-	26 min
WEIGHTS & DIMENSIONS	Length / Width / Height [mm]	4519/1863/1584	4519/1863/1584
	Wheelbase [mm]	2681	2681
	Front & rear track [mm]	1590/1580	1590/1580
	Boot capacity [l]	642L/508L	490L/400L
	Fuel tank capacity [l]	55	45
	Max allowable weight [kg]	2180	2410
	Max towing weight (unbraked) [kg]	750	750
	Max towing weight (braked - 12%) [kg]	1800	1800

# TECHNICAL SPECIFICATIONS - Terramar VZ

1.5 TSI 200kW 272hp PHEV DSG(KP1C1Y) / 2.0 TSI 195kW 265hp DSG(KP1CYS)

ENGINE

	1.5 TSI 200kW 272hp (KP1C1Y)	2.0 TSI 195kW 265hp (KP1CYS)
Cylinder/Valve (Total)	4/16	4/16
Displacement (cc)	1498	1984
Cylinder bore and stroke (mm)	74.5 / 85.9	82.5 / 92.8
Compression ratio	11.5	9.6
Maximum power (kW (HP)/rpm)	200 (272)/4750-6500	195(265)/5000-6500
Maximum torque (Nm/rpm)	400/850-4750	400/1650-4350
Fuel supply system	TSI Direct Injection	TSI Direct Injection
Aspiration	Turbocharged	Turbocharged
Fuel type	Petrol (ROZ 95)	Petrol (ROZ 95)

PERFORMANCE

Maximum speed [km/h]	215	243
Acceleration 0-100 km/h (s)	7.3	5.9

TRANSMISSION

Gearbox type	DSG (Automatic)	DSG (Automatic)
Transmission of drive	Front Wheel Drive	Front Wheel Drive

ELECTRIC SYSTEM

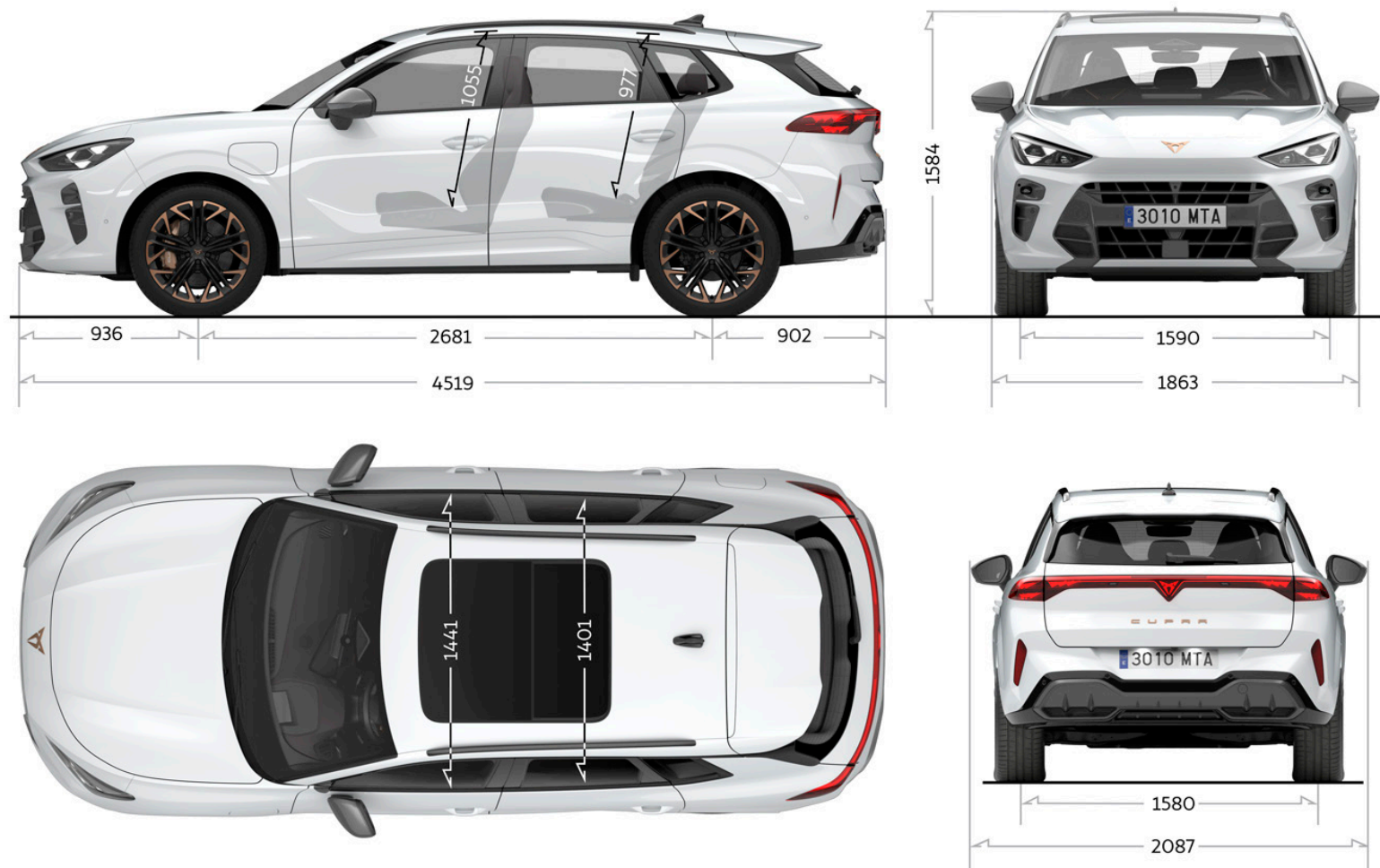
Battery Capacity [kWh]	25.8 (20 net)	-
Battery Type	NMC	-
Electric Range [km]	118	-
Charging Time (AC 11kW) 0-100% SoC	2 hrs 30 mins	-
Charging Time (DC 50kW) 10-80% SoC	26 min	-

WEIGHTS & DIMENSIONS

Length / Width / Height [mm]	4519/1863/1584	4519/1863/1584
Wheelbase [mm]	2681	2681
Front & rear track [mm]	1590/1580	1590/1580
Boot capacity [l]	490L/400L	602L/508L
Fuel tank capacity [l]	45	60
Max allowable weight [kg]	2420	2290
Max towing weight (unbraked) [kg]	750	750
Max towing weight (braked - 12%) [kg]	2000	2200



## Dimensional Drawing



[\*\*EXPLORE\*\*](#)[\*\*FIND A RETAILER\*\*](#)[\*\*TEST DRIVE\*\*](#)[\*\*FINANCE OFFERS\*\*](#)[\*\*CONFIGURE\*\*](#)

CUPRA is committed to a policy of continuous product development and reserves the right to make changes to specifications, colours and prices without notice. The information in this product guide can therefore be given as guidance only. While CUPRA makes every effort to ensure that specifications are accurate at the time of publication, you should always check with your authorised CUPRA Partner for the latest information. Due to limitations of the printing process the colours reproduced in this guide may vary slightly from the actual paint colours and material.