



YEAR
WARRANTY



CUPRA
LEON

EXPLORE

CONFIGURE



THE CUPRA LEON

AN UNBREAKABLE THREAD TIES YOU
TO YOUR DESTINY.

THIS THREAD TURNS YOUR IDEAS INTO
A PULSE OF INTENSE EMOTIONS,
DRIVING YOU TOWARD THE FINISH
LINE—A JOURNEY BOUND BY PASSION.
IT IS HERE THAT THE SOUL IS IGNITED AT
EVERY TURN. THIS ISN'T JUST A DESIRE;
IT'S THE MAGNETIC FIELD OF YOUR
WILDEST VISION. AN ATTRACTION SO
STRONG THAT YOU CAN'T HELP BUT
EMBRACE IT. THIS IS THE POWER OF
ATTRACTION, THE DRIVING FORCE
BEHIND ANY SUCCESSFUL JOURNEY

[FIND A RETAILER](#)

[TEST DRIVE](#)

[FINANCE OFFERS](#)



LEON 5D

SELECT YOUR ENGINE

			CO2 WLTP	Fuel Economy WLTP	NOx	VRT Rate	Annual Motor Tax	RRP	ROTR
LEON V1	KUGBNX	Leon 1.5 TSI 150hp	131 g/km	5.8 l/100km	25.7 mg/km	19.25%	€210	€34,815	€35,815
	KUGB5Z	Leon 1.5 eTSI 150hp DSG	121 g/km	5.3 l/100km	11.8 mg/km	16.75%	€200	€37,390	€38,390
	KUGBLZ	Leon 2.0TDI 150hp DSG	127 g/km	4.8 l/100km	23.8 mg/km	17.50%	€200	€39,590	€40,590
	KUGB0Y	Leon e-hybrid 204hp DSG	28 g/km	0.3 l/100km	5.9 mg/km	7.00%	€140	€44,425	€45,425
LEON V2	KUGBNX	Leon 1.5 TSI 150hp	131 g/km	5.8 l/100km	25.7 mg/km	19.25%	€210	€36,545	€37,545
	KUGB5Z	Leon 1.5 eTSI 150hp DSG	121 g/km	5.3 l/100km	11.8 mg/km	16.75%	€200	€39,075	€40,075
	KUGBLZ	Leon 2.0TDI 150hp DSG	127 g/km	4.8 l/100km	23.8 mg/km	17.50%	€200	€41,290	€42,290
	KUGB0Y	Leon e-hybrid 204hp DSG	28 g/km	0.3 l/100km	5.9 mg/km	7.00%	€140	€45,755	€46,755
LEON VZ	KUGC1Y	Leon VZ e-Hybrid 272hp DSG	33 g/km	0.4 l/100km	10.3 mg/km	7.00%	€140	€49,010	€50,010
	KUGC3S	Leon VZ 2.0TSI 300hp DSG	172 g/km	7.6 l/100km	14.7 mg/km	35.00%	€600	€59,215	€60,215

Optional extras and Irish standard equipment may have an effect on the CO2, NOx and Fuel Economy figures. The CO2, NOx & Fuel Economy figures are the official figures obtained from tests under standardised EU test conditions. Pricing effective as of 01.01.2026. Subject to change.

ENGINES

ROTR: Recommended on the road price is RRP including delivery charges of €1,000 as recommended by CUPRA Ireland. Please note every effort has been made to ensure the contents of this publication (including RRP, CO2, fuel consumption and technical information) were accurate and up-to-date at the time of publishing. CUPRA Ireland reserves the right to change specification, prices and withdraw products from sale without notice. Any such alternations will be notified to CUPRA Retailers at the earliest opportunity. Please consult your local CUPRA retailer for the latest product information.



LEON SP

SELECT YOUR ENGINE

			CO2 WLTP	Fuel Economy WLTP	NOx	VRT Rate	Annual Motor Tax	RRP	ROTR
LEON SP V1	KUDBNX	Leon SP 1.5 TSI 150hp	133 g/km	5.8 l/100km	25.7 mg/km	19.25%	€210	€36,930	€37,930
	KUDB5Z	Leon SP 1.5 eTSI 150hp DSG	123 g/km	5.4 l/100km	14.1 mg/km	17.50%	€200	€39,305	€40,305
	KUDBLZ	Leon SP 2.0TDI 150hp DSG	128 g/km	4.9 l/100km	23.8 mg/km	17.50%	€200	€41,575	€42,575
	KUDB0Y	Leon SP e-hybrid 204hp DSG	29 g/km	0.4 l/100km	5.9 mg/km	7.00%	€140	€46,685	€47,685
LEON SP V2	KUDBNX	Leon SP 1.5 TSI 150hp	133 g/km	5.8 l/100km	25.7 mg/km	19.25%	€210	€38,990	€39,990
	KUDB5Z	Leon SP 1.5 eTSI 150hp DSG	123 g/km	5.4 l/100km	14.1 mg/km	17.50%	€200	€41,310	€42,310
	KUDBLZ	Leon SP 2.0TDI 150hp DSG	128 g/km	4.9 l/100km	23.8 mg/km	17.50%	€200	€43,595	€44,595
	KUDB0Y	Leon SP e-hybrid 204hp DSG	29 g/km	0.4 l/100km	5.9 mg/km	7.00%	€140	€48,505	€49,505
LEON SP VZ	KUGC1YA	Leon VZ e-Hybrid 272hp DSG	34 g/km	0.4 l/100km	10.3 mg/km	7.00%	€140	€50,895	€51,895
	KUGCIZA	Leon VZ 2.0TSI 333hp DSG 4WD	188 g/km	8.3 l/100km	24.2 mg/km	35.00%	€600	€62,375	€63,375

Optional extras and Irish standard equipment may have an effect on the CO2, NOx and Fuel Economy figures. The CO2, NOx & Fuel Economy figures are the official figures obtained from tests under standardised EU test conditions. Pricing effective 01.01.2026. Subject to change.

COLOUR

PREMIUM METALLIC

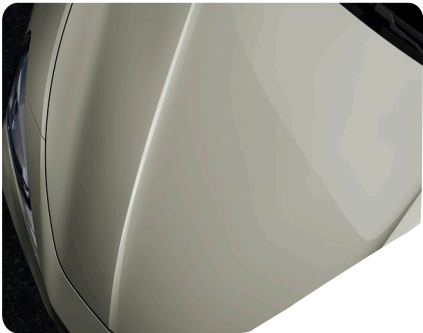
GRAPHENE GREY

V1 V2 VZ



TAIGA GREY

V1 V2 VZ



DARK VOID

V1 V2 VZ



METALLIC

MAGNETIC TECH

V1 V2 VZ



MIDNIGHT BLACK

V1 V2 VZ



GLACIAL WHITE

V1 V2 VZ



FIORD BLUE

V1 V2 VZ



NON - METALLIC

MAGNETIC TECH MATT

V1 V2 VZ



CENTURY BRONZE MATT

VZ



ENCELADUS GREY MATT

VZ



MATT

PAINT

Standard ■
Optional ■

WHEELS



GARBI DARK
18" SPORT ALLOY

V1



POLAR (R8E/PD1)
19" MACHINED SPORT BLACK / SILVER

V2 V2



POLAR COPPER (R9E/PD2)
19" MACHINED SPORT BLACK / COPPER

V2 V2



WINDSTORM (R8A)
18" MACHINED SPORT BLACK / SILVER

V2



MISTRAL (R9C/PD3)
19" MACHINED SPORT BLACK / SILVER

V2 V2



MISTRAL COPPER (R9G/PD4)
19" MACHINED SPORT BLACK / COPPER

V2 V2



GARBI COPPER (R8E)
18" MACHINED COPPER

V2



HAILSTORM (R9I)
19" FORGED MACHINED SPORT BLACK / SILVER

V2



HAILSTORM COPPER (R9M)
19" FORGED MACHINED SPORT BLACK / COPPER

V2

WHEELS

Standard ■
Optional ■

INTERIORS

SHARP AMBIENT - AQ



V1 V2

DYNAMIC AMBIENT - CG + PS2



V2 VZ

PROGRESSIVE AMBIENT - KE + PR2



V2 VZ

STANDARD EQUIPMENT

LEON V1 5D/SP

Model (5D)	RRP
CUPRA Leon 1.5 TSI 150hp	€34,815
CUPRA Leon 1.5e TSI 150hp DSG	€37,390
CUPRA Leon 2.0TDI 150hp DSG	€39,590
CUPRA Leon e-hybrid 204hp DSG	€44,425

Model (SP)	RRP
CUPRA Leon SP 1.5 TSI 150hp	€36,930
CUPRA Leon SP 1.5e TSI 150hp DSG	€39,305
CUPRA Leon SP 2.0TDI 150hp DSG	€41,575
CUPRA Leon SP e-hybrid 204hp DSG	€46,685



EXTERIOR

- GARBI 18" Alloy Wheels in Sport Black
- Heat-insulating and tinted rear windows
- Front and rear power windows
- Black roof rails
- Front Full LEDs
- Rear 3D LED lights w/dynamic turn signal & illuminated CUPRA Logo
- Dynamic headlight range control self-adjusting while driving
- Front LED fog lamps with cornering function
- Welcome light in exterior mirrors
- Exterior mirrors, power-folding, adjustable and heated with front passenger exterior mirror lowering function
- Separate daytime running light w/automatic headlight control & coming and leaving home

TECHNOLOGY

- Keyless Go
- 10.25" Digital cockpit
- 12.9" Infotainment System with Illuminated Sliders
- USB-C (2x Front | 2x Rear)
- 7 Speakers
- Voice Control
- Wireless Android Auto & Apple CarPlay
- DAB Radio
- CUPRA CONNECT
- Wireless Charger
- Heat Insulating Windshield
- Start - stop system
- Rain & Light sensor
- Front & Rear Parking Sensors
- Electric Tailgate (SP Only)

INTERIOR

- Multi-function sports steering wheel, heated w/Satellites (DSG Only)
- Illuminated CUPRA lettering in door apertures
- Progressive Steering
- Textile sport seats
- CUPRA Drive Profile
- Manually adjustable height and lumbar support for front seats
- Mechanical rear seat release
- Two reading lights up in front and two in the rear
- Climatronic 3 zone air conditioning
- Aluminium Pedals (Automatic Only)
- Black roof cloth
- Auto dimming interior mirror
- Front centre arm rest

SAFETY

- XDS electronic differential lock with dynamic traction support
- i-Size and top tether child seat anchors in rear and front passenger seats
- Front Assist with Cross Traffic Assist
- Lane Assist
- Intelligent Speed Assist
- Traffic Sign Recognition
- Attention & Drowsiness Assist
- Driver & Passenger Airbags
- Side Airbag, Curtain & Interaction Airbag in Front
- Emergency Steering Support & Turn Assist
- 3-point safety belts for front and rear seats, with visual and acoustic reminder
- Adaptive Cruise Control
- High Beam Control
- Emergency Call

STANDARD EQUIPMENT LEON V1 5D/SP

Images are shown for representative purposes only and may contain optional extras.*Represents a model that has a higher VRT rate based on an upgraded wheel or other additional options



STANDARD EQUIPMENT

LEON V2 5D/SP (in addition to Leon V1)

Model (5D)	RRP
CUPRA Leon 1.5 TSI 150hp	€36,545
CUPRA Leon 1.5e TSI 150hp DSG	€39,075
CUPRA Leon 2.0TDI 150hp DSG	€41,290
CUPRA Leon e-hybrid 204hp DSG	€45,755

Model (SP)	RRP
CUPRA Leon SP 1.5 TSI 150hp	€38,990
CUPRA Leon SP 1.5e TSI 150hp DSG	€41,310
CUPRA Leon SP 2.0TDI 150hp DSG	€43,595
CUPRA Leon SP e-hybrid 204hp DSG	€48,505

EXTERIOR

- WINDSTORM 18" Machined Sport in Black/Silver
- Towing Preparation

INTERIOR

- Seat Heaters in Front
- Smart Interior Wraparound Lighting

SAFETY

- Alarm
- Virtual Pedal (SP Only)

TECHNOLOGY

- Rear View Camera
- Keyless Advanced

Images are shown for representative purposes only and may contain optional extras.

**STANDARD
EQUIPMENT - V2**



TECHNOLOGY

- DCC - Dynamic chassis control
- Rear View Camera
- Keyless Advanced
- Smart Wraparound Interior Lighting

INTERIOR

- Electric Drivers Seat
- Dinamica bucket seats
- Virtual Pedal (SP Only)

SAFETY

- Alarm

EXTERIOR

- POLAR 19" Machined Alloy Wheels in Sport Black/Silver

STANDARD EQUIPMENT

LEON VZ

(in addition to Leon V1)

Model (5D)	RRP
CUPRA Leon VZ e-Hybrid 272hp DSG	€49,010
CUPRA Leon VZ 2.0TSI 300hp DSG	€59,215

Model (SP)	RRP
CUPRA Leon SP VZ e-Hybrid 272hp DSG	€50,895
CUPRA Leon SP VZ 2.0TSI 333hp DSG	€62,375

STANDARD
EQUIPMENT - VZ

Images are shown for representative purposes only and may contain optional extras.



E-HYBRID BENEFITS

GO FURTHER FOR LESS

e-HYBRID can achieve up to 910* kilometer per full tank of petrol making them more fuel efficient than pure combustion engines.

BEST OF BOTH WORLDS

Available with our 204 HP & 272 HP e-HYBRID powertrain. Drive in three modes: All electric; pure TSI engine; or a combination of the two.

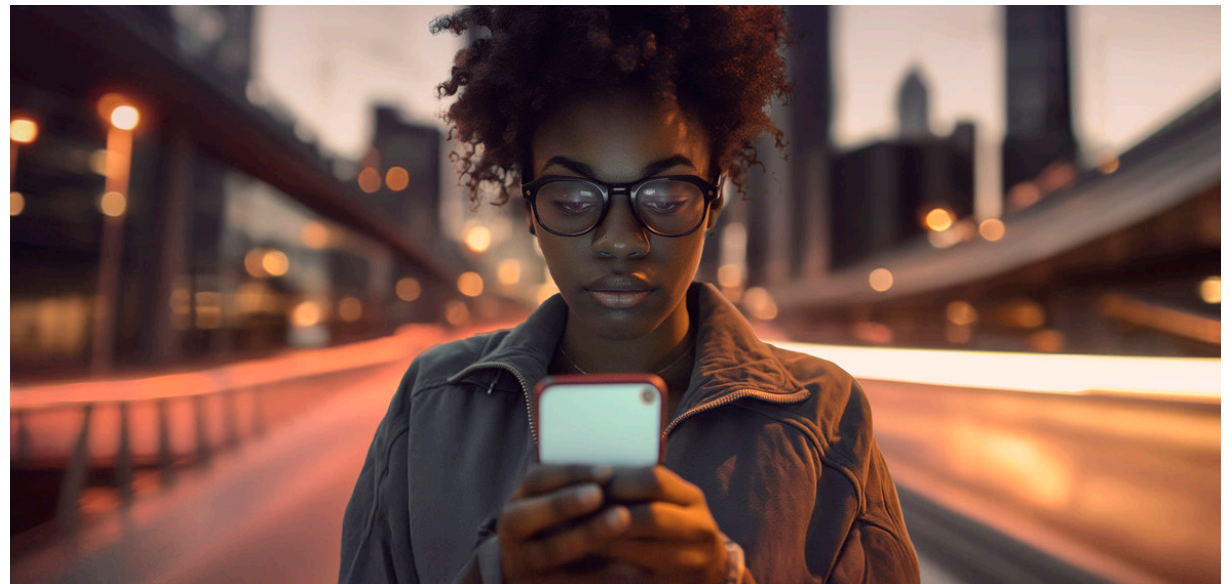
FREEDOM TO MOVE

An all electric range of up to 132 kilometers allows for emission-free urban driving.

EFFICIENT AND CONNECTED CHARGING

Charge with either a DC fast-charger or at home with an AC wallbox. Being able to charge from 10-80% on a 50KW fast charger in 26minutes whilst also monitoring activity via your smartphone with CUPRA CONNECT

CUPRA Leon e-HYBRID comes with a MODE 2 (3-pin) as standard.



OPTIONAL EQUIPMENT

			LEON V1	LEON V2	LEON VZ	RRP From*
ALLOY WHEELS	GARBI COPPER - 18" wheels Machined in Copper	R8E	-	◦	-	€483
	POLAR COPPER - 19" wheels Machined in Sport Black/Copper	R9E	-	-	◦	€483
	MISTRAL - 19" wheels Machined in Sport Black/Silver	R9C	-	-	◦	€931
	MISTRAL COPPER - 19" wheels Machined in Sport Black/Copper	R9G	-	-	◦	€1,241
	HAILSTORM- 19 "wheels Machined in Sport Black/Silver	R9I	-	-	◦	€1,283
	HAILSTORM COPPER - 19 " wheels Machined in Sport Black/Copper	R9M	-	-	◦	€1,929
	Driving Performance (DCC* & 19" POLAR)	PD1	-	◦	-	€1,357
	Driving Performance (DCC* & 19" POLAR COPPER)	PD2	-	◦	-	€1,743
	Driving Performance (DCC* & 19" MISTRAL)	PD3	-	◦	-	€1,601
	Driving Performance (DCC* & 19" MISTRAL COPPER)	PD4	-	◦	-	€1,970
PAINT FINISHES	Soft Paint	P	•	•	•	No Cost
	Metallic Paint	M	◦	◦	◦	€917
	Special Paint	C	◦	◦	◦	€1,326
	Matt Paint	T	◦	◦	◦	€2,652
LEATHER INTERIOR	Sharp Ambient	AQ	•	•	-	No Cost
	Dynamic Ambient [Dinamica Bucket Seats, Power Adjustment with Memory for Driver]	CG + PS2	-	◦	•	€971
	Progressive Ambient		-	◦	-	€2,032
	[Leather Bucket Seats, Power Adjustment with Memory for both front Seats]	KE + PR2	-	-	◦	€1,326

OPTIONAL EQUIPMENT

		LEON V1	LEON V2	LEON VZ	RRP From*	
SPECIAL ITEMS	Immersive by Sennheiser – 11x Speaker & 1x Subwoofer Premium Sound System *Requires PG6 (except PHEV)	PA1	-	o	-	€712
		PA2	-	-	o	
	Pure Performance – Matrix LED Ultra w/signature & w/ ceremony,	PP2	-	o	o	€1444
	Intelligent Drive Lite MQ [Only for Manual] – Side & Exit Assist – Pre-Crash Assist	WF3	-	o	-	€565
	Intelligent Drive DQ [Only for DSG] – Side & Exit Assist – Pre-Crash Assist – Lane Keeping System Plus, Semi Auto Control in Emergency – Traffic Jam Assist – Intelligent Park Assist	WF4	-	o	o	€897
	Skyline – Panoramic Sunroof [Leon SP PHEV V2 adding PTC removes Towbar Prep (Wiring)] [Not Compatible with PRP]	PTC	-	o	o	€1,194
	Navigation System	RN4	-	o	o	€778
	Mirrors in Carbon Fibre Black	PFE	-	o	o	€784
	Mirrors in Carbon Fibre Copper	PFI	-	o	o	€844
	Emergency Spare Wheel (18")	PG6	o	o	-	€115
	CUPRA CONNECT Plus [Required with Intelligent Drive Packs]	YOS	-	o	o	No Cost
	CUPRA Side Skirts	PQ6	-	o	-	€422
	Towing Preparation [Wiring]	PRP	o	•	o	€148
	e-Hybrid Mode 3 Charging Cable	***	o	o	o	€320



CUPRA CONNECT

FORGET WHERE YOU'VE PARKED?

Simply open the My CUPRA app and you will be able to easily locate your vehicle in cities or large parking areas.

The GPS coordinates will give you the exact address and you are then able to navigate to it through the easy to use map.

IS MY CAR SECURE?

For those moments when you're unsure if you've locked your car.

Through the My CUPRA app, authorised users can see and control the lock status of the doors and boot.

DETERMINE YOUR IDEAL TEMPERATURE

On those cold winter mornings, you'll no longer need to sit in your car while you wait for it to warm up and defrost.

With its remote temperature control, you can program the perfect temperature you want when sitting at the wheel, defrosting the windows in the process*.

WHEN IS MY SERVICE DUE?

You have enough things in your head to have to remember your next car service.

Activate automatic service scheduling and your chosen authorised service partner will contact you as soon as your vehicle detects the need of a service (inspection or relevant warning light).

CUPRA CONNECT

CUPRA CONNECT enables access to multiple features and benefits including:

VEHICLE STATUS

- Driving Data
- Vehicle Health Data

REMOTE & CONTROL

- Anti-Theft Alert
- Remote Lock & Unlock
- Remote Auxiliary heater

COMFORT

- Parking Position
- Personalisation

SAFE & SECURE

- Service scheduling
- Customer care
- Breakdown call

NAVIGATION**

- Online POI search
- Online destination import
- Online route impact
- Online maps update
- Online traffic information
- Local hazard Information
- Online route calculation
- Dynamic POI (petrol+charging+parking information)

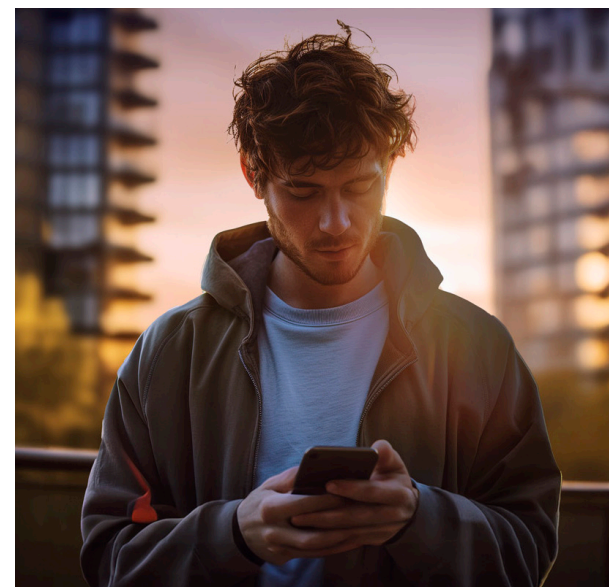
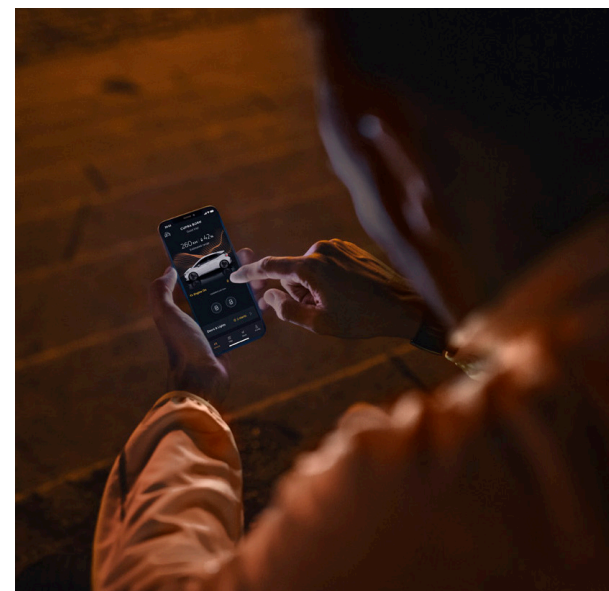
DOWNLOAD CUPRA APP



APPSTORE



PLAY STORE



*Feature only available on e-HYBRID and fully electric models. **Only available if Navigation option is fitted.



WARRANTIES

FIVE-YEAR MANUFACTURE WARRANTY

All new CUPRA's registered on or after 01/01/2026 in Ireland, come with a five year/100,000 kilometer warranty, which protects your car against the failure of most mechanical and electrical components due to manufacturing defects. This comprises a two-year manufacturer's warranty with unlimited mileage, plus a further three years up to a maximum of 100,000 kilometer (whichever is soonest).

THREE-YEAR PAINT WARRANTY

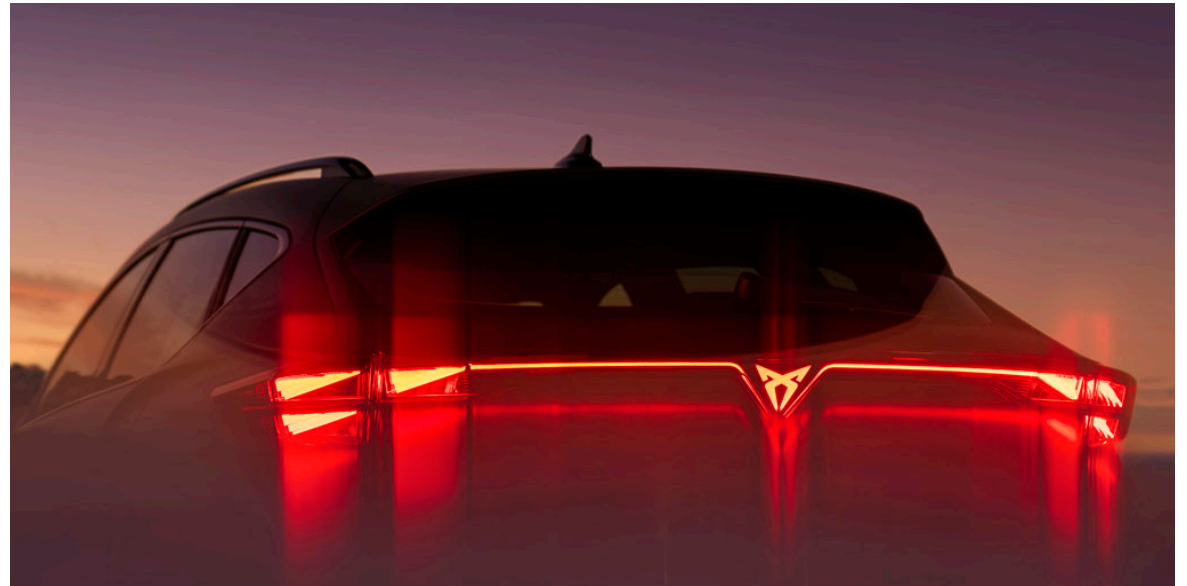
The paintwork of all models featured in this product guide are covered against manufacturing defects for a period of three years. Naturally, the vehicle must be cared for in compliance with the operating instructions which will be found in your vehicle handbook. Please consult your authorised CUPRA Retailer or repairer for full warranty details

12-YEAR BODY PROTECTION WARRANTY

The internal body sections and panels of the models featured in this product guide are covered against corrosion originating from internal cavities for 12 years. Naturally, the vehicle must be cared for in compliance with the operating instructions which will be found in your vehicle handbook. Please consult your authorised CUPRA Retailer or repairer for full warranty details.

CUPRA ROADSIDE ASSISTANCE (INCLUDING EUROPEAN COVER)

Any new CUPRA purchased and registered in the Ireland from an authorised CUPRA Retailer, is covered free by CUPRA Assistance (including European cover) for roadside repairs or recovery to an authorised repairer for the duration of the vehicles warranty. Terms and conditions apply.



BATTERY WARRANTY*

The high voltage batteries and named components for plug-In hybrid vehicles (PHEV) are warranted against all defects in materials and workmanship for eight years or up to 160,000 kilometers.

A gradual reduction in battery energy content over time is a normal feature of high voltage battery and does not constitute a warrantable defect. For PHEVs, the battery energy content degradation warranty lasts for eight years or up to 160,000 kilometers, whichever comes first. Where the battery energy content of the high voltage battery is measured by a CUPRA authorised repairer and is found to be less than 70% during the warranty period, then it will be repaired or replaced under warranty subject to conditions. For full details, please go to the CUPRA Ireland website whichever comes first.

CUPRA PARTS WARRANTY

CUPRA parts and accessories supplied after new vehicle delivery are covered by our 24 months parts warranty

*Only available on e-HYBRID and fully electric models.



CUPRA CARE

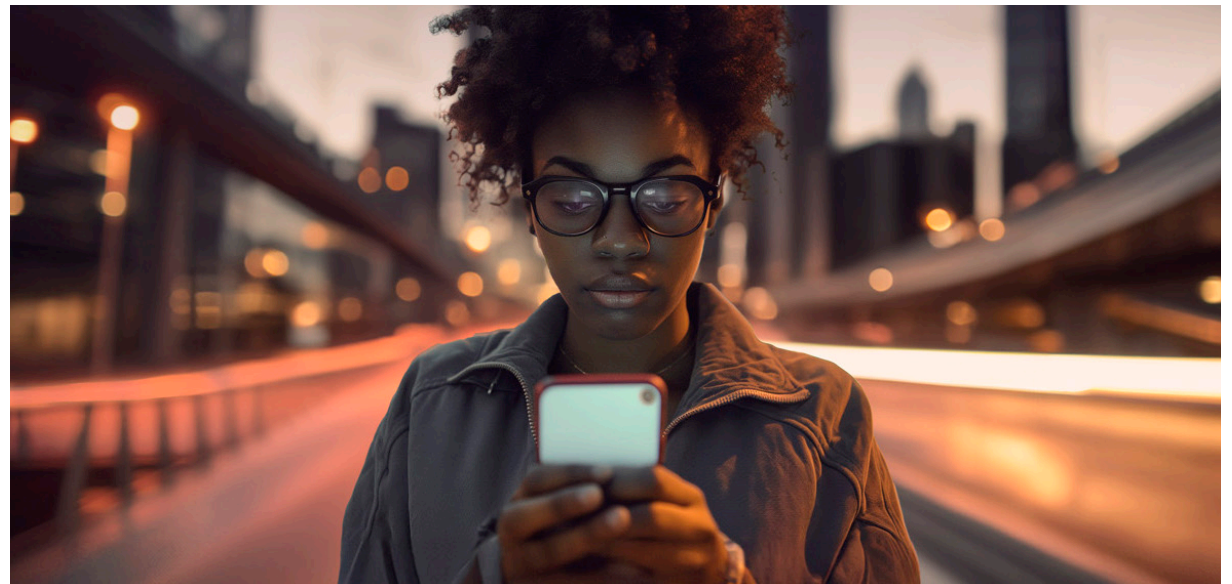
The CUPRA Leon has a 5 year (100,000km)* manufacturers warranty as standard. For further peace of mind, an optional CUPRA Care pack is available which takes care of the maintenance of your Leon allowing you to enjoy the drive.

For just €14.99 per month, the Leon Care Pack

Includes:

- 3 Oil Change Service
- Brake Fluid Change
- Pollen Filter Replacement
- Complimentary Vehicle Health Check

**CONTACT YOUR PREFERRED CUPRA RETAILER SHOULD
YOU WISH TO PURCHASE A CARE PACK**



*CUPRA 5 Year Warranty is applicable for all cars registered from 01.01.2026

**CUPRA
CARE BENEFITS**

TECHNICAL SPECIFICATIONS - LEON 5D

KUGBNX, KUGB5Z, KUGBLZ, KUGBOYA

	1.5 TSI 150hp (KUGBNX)	1.5 eTSI 150hp DSG (KUGB5Z)	2.0 TDI 150hp DSG (KUGBLZ)	e-Hybrid 204hp DSG (KUGBOY)
ENGINE	Cylinder/Valve (Total)	4/16	4/16	4/16
	Displacement (cc)	1498	1498	1498
	Cylinder bore and stroke (mm)	74.5 / 85.9	74.5 / 85.9	81.0 / 95.5
	Compression ratio	12	12	16
	Maximum power (kW (HP)/rpm)	110(150)/5000-6000	110(150)/5000-6000	110(150)/3000-4200
	Maximum torque (Nm/rpm)	250/1500-3500	250/1500-3500	360/1600-2750
	Fuel supply system	TSI Direct Injection	TSI Direct Injection	Direct Injection : Common Rail
	Aspiration	Turbocharged	Turbocharged	Turbocharged
	Fuel type	Petrol (ROZ 95)	Petrol (ROZ 95)	DIESEL
PERFORMANCE	Maximum speed [km/h]	215	215	213
	Acceleration 0-100 km/h (s)	8.9	8.7	8.5
TRANSMISSION	Gearbox type	Manual	DSG (Automatic)	DSG (Automatic)
	Transmission of drive	Front Wheel Drive	Front Wheel Drive	Front Wheel Drive
ELECTRIC SYSTEM	Battery Capacity [kWh]	-	-	25.8 (20 net)
	Battery Type	-	-	Li-ion
	Electric Range [km]	-	-	132
	Charging Time (AC 11kW) 0-100% SoC	-	-	2 hrs 30 mins
	Charging Time (DC 50kW) 10-80% SoC	-	-	26 mins
WEIGHTS & DIMENSIONS	Length / Width / Height [mm]	4398/1799/1444	4398/1799/1444	4398/1799/1444
	Wheelbase [mm]	2686	2686	2686
	Boot capacity [l]	380	380	380
	Fuel tank capacity [l]	45	45	45
	Max allowable weight [kg]	1860-1880	1890-1910	1960
	Max towing weight (unbraked) [kg]	680-700	700-720	730
	Max towing weight (braked - 12%) [kg]	1500	1500	1600

TECHNICAL SPECIFICATIONS - LEON 5D (VZ)

KUGC1Y & KUGCIZA

ENGINE		VZ e-Hybrid 272hp DSG (KUGC1Y)	VZ 2.0 TSI 300hp DSG (KUGCIZ)
	Cylinder/Valve (Total)	4/16	4/16
	Displacement (cc)	1498	1984
	Cylinder bore and stroke (mm)	74.5 / 85.9	82.5/92.8
	Compression ratio	11.5	9.3
	Maximum power (kW (HP)/rpm)	200(272)/4750-6500	221(300)/5300-6500
	Maximum torque (Nm/rpm)	400/850-4750	400/2000-5200
	Fuel supply system	TSI Direct Injection	TSI Direct Injection
	Aspiration	Turbocharged	Turbocharged
	Fuel type	Petrol/Electric	Petrol (ROZ 95)
PERFORMANCE	Maximum speed [km/h]	229	250
	Acceleration 0-100 km/h (s)	7.1	5.7
TRANSMISSION	Gearbox type	DSG (Automatic)	DSG (Automatic)
	Transmission of drive	Front Wheel Drive	Front Wheel Drive
ELECTRIC SYSTEM	Battery Capacity [kWh]	25.8 (20 net)	-
	Battery Type	Li-ion	-
	Electric Range [km]	124	-
	Charging Time (AC 11kW) 0-100% SoC	2 hrs 30 mins	-
	Charging Time (DC 50kW) 10-80% SoC	26 mins	-
WEIGHTS & DIMENSIONS	Length / Width / Height [mm]	4399/1799/1467	4398/1799/1444
	Wheelbase [mm]	2686	2686
	Boot capacity [l]	270	380
	Fuel tank capacity [l]	40	50
	Max allowable weight [kg]	2140	2000
	Max towing weight (unbraked) [kg]	-	740
	Max towing weight (braked - 12%) [kg]	-	1600

TECHNICAL SPECIFICATIONS - LEON SP

KUDBNX, KUDB5Z, KUDBLZA, KUDBOYA

ENGINE

	1.5 TSI 150hp (KUDBNX)	1.5 eTSI 150hp DSG (KUDB5Z)	2.0 TDI 150hp DSG (KUDBLZ)	e-Hybrid 204hp DSG (KUDBOY)
Cylinder/Valve (Total)	4/16	4/16	4/16	4/16
Displacement (cc)	1498	1498	1968	1498
Cylinder bore and stroke (mm)	74.5 / 85.9	74.5 / 85.9	81.0 / 95.5	74.5/85.9
Compression ratio	12	12	16	11.5
Maximum power (kW (HP)/rpm)	110(150)/5000-6000	110(150)/5000-6000	110(150)/3000-4200	150(204)/4000-6000
Maximum torque (Nm/rpm)	250/1500-3500	250/1500-3500	360/1600-2750	350/850-4000
Fuel supply system	TSI Direct Injection	TSI Direct Injection	Direct Injection : Common Rail	TSI Direct Injection
Aspiration	Turbocharged	Turbocharged	Turbocharged	Turbocharged
Fuel type	Petrol (ROZ 95)	Petrol (ROZ 95)	DIESEL	Petrol/Electric

PERFORMANCE

Maximum speed [km/h]	216	216	214	220
Acceleration 0-100 km/h (s)	9.2	9.0	8.7	7.7

TRANSMISSION

Gearbox type	Manual	DSG (Automatic)	DSG (Automatic)	DSG (Automatic)
Transmission of drive	Front Wheel Drive	Front Wheel Drive	Front Wheel Drive	Front Wheel Drive

ELECTRIC SYSTEM

Battery Capacity [kWh]	-	-	-	25.8 (20 net)
Battery Type	-	-	-	Li-ion
Electric Range [km]	-	-	-	131
Charging Time (AC 11kW) 0-100% SoC	-	-	-	2 hrs 30 mins
Charging Time (DC 50kW) 10-80% SoC	-	-	-	26 mins

WEIGHTS & DIMENSIONS

Length / Width / Height [mm]	4656/1799/1438	4656/1799/1438	4656/1799/1438	4657/1799/1463
Wheelbase [mm]	2686	2686	2686	2686
Boot capacity [l]	620	620	620	470
Fuel tank capacity [l]	45	45	45	40
Max allowable weight [kg]	1940-1970	1970-2000	2050	2140
Max towing weight (unbraked) [kg]	700-720	720-740	750	750
Max towing weight (braked - 12%) [kg]	1500	1500	1600	1700

TECHNICAL SPECIFICATIONS - LEON SP (VZ)

KUDC1Y, KUDC3SA

ENGINE

	VZ e-Hybrid 272hp DSG (KUDC1Y)	VZ 2.0 TSI 333hp DSG 4WD (KUDC3S)
Cylinder/Valve (Total)	4/16	4/16
Displacement (cc)	1498	1984
Cylinder bore and stroke (mm)	74.5 / 85.9	82.5 / 92.8
Compression ratio	11.5	9.3
Maximum power (kW (HP)/rpm)	200(272)/4750-6500	245(333)/5600-6500
Maximum torque (Nm/rpm)	400/850-4750	420/2100-5500
Fuel supply system	TSI Direct Injection	TSI Direct Injection
Aspiration	Turbocharged	Turbocharged
Fuel type	Petrol/Electric	Petrol (ROZ 95)

PERFORMANCE

Maximum speed [km/h]	229	250
Acceleration 0-100 km/h (s)	7.3	4.8

TRANSMISSION

Gearbox type	DSG (Automatic)	DSG (Automatic)
Transmission of drive	Front Wheel Drive	Front Wheel Drive

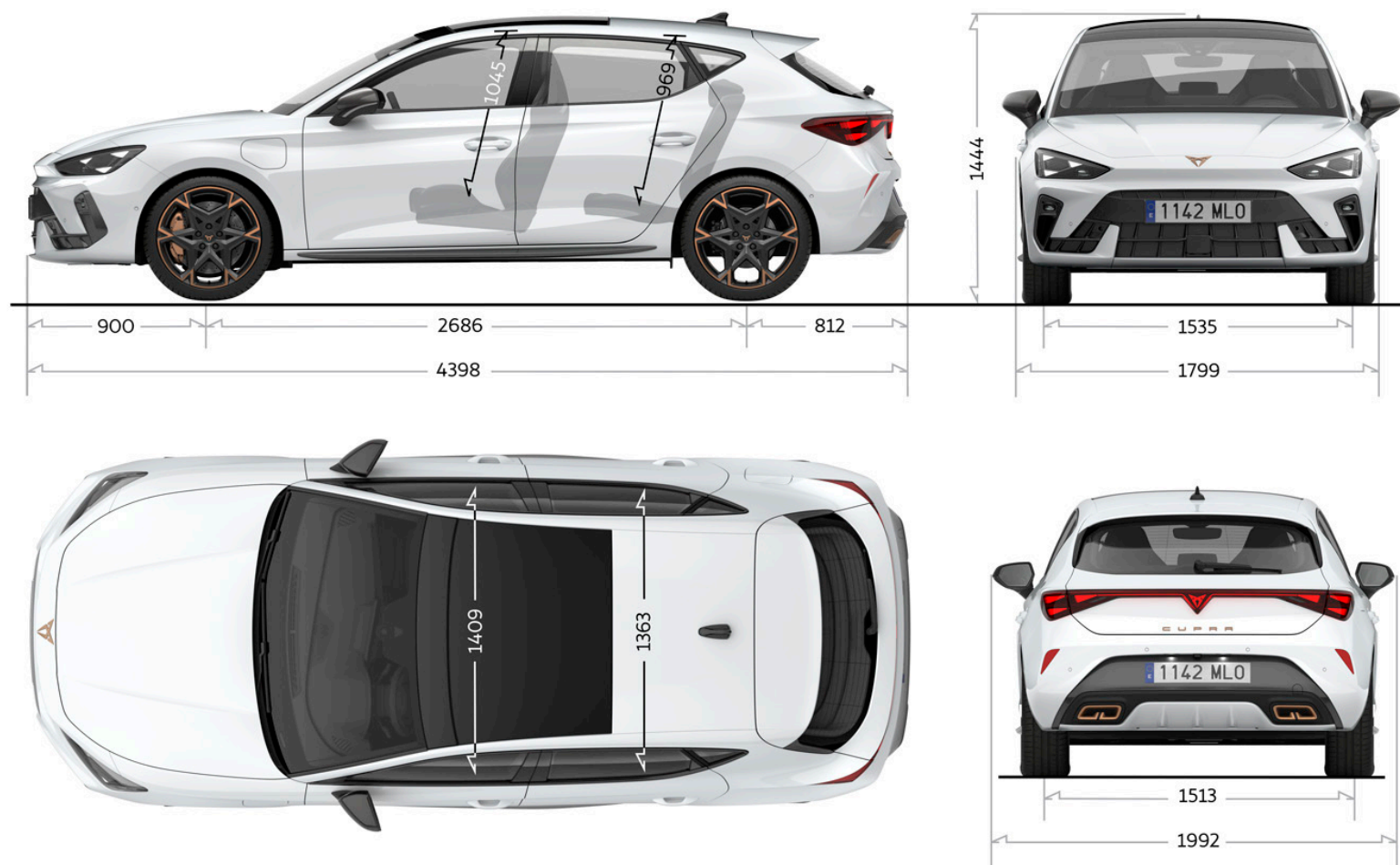
ELECTRIC SYSTEM

Battery Capacity [kWh]	25.8 (20 net)	-
Battery Type	Li-ion	-
Electric Range [km]	122	-
Charging Time (AC 11kW) 0-100% SoC	2 hrs 30 mins	-
Charging Time (DC 50kW) 10-80% SoC	26 mins	-

WEIGHTS & DIMENSIONS

Length / Width / Height [mm]	4657/1799/1463	4659/1799/1438
Wheelbase [mm]	2686	2686
Boot capacity [l]	470	620
Fuel tank capacity [l]	40	55
Max allowable weight [kg]	2150	2150
Max towing weight (unbraked) [kg]	750	750
Max towing weight (braked - 12%) [kg]	1700	1700

Dimensional Drawing



Dimensional Drawing





EXPLORE

FIND A RETAILER

TEST DRIVE

FINANCE OFFERS

CONFIGURE

CUPRA is committed to a policy of continuous product development and reserves the right to make changes to specifications, colours and prices without notice. The information in this product guide can therefore be given as guidance only. While CUPRA makes every effort to ensure that specifications are accurate at the time of publication, you should always check with your authorised CUPRA Partner for the latest information. Due to limitations of the printing process the colours reproduced in this guide may vary slightly from the actual paint colours and material.