



**YEAR**  
WARRANTY



# CUPRA FORMENTOR

EXPLORE

CONFIGURE





# THE CUPRA FORMENTOR

ARE YOU OBSESSED WITH  
PUSHING LIMITS? SO ARE WE.

DIVE INTO THE ELECTRIFYING  
ESSENCE OF CUPRA FORMENTOR,  
WHERE EVERY KILOMETER IS A  
STATEMENT OF OUR CONSTANT  
PURSUIT TO REDEFINE THE WAY OF  
DRIVING.

[FIND A RETAILER](#)

[TEST DRIVE](#)

[FINANCE OFFERS](#)



# SELECT YOUR ENGINE

			CO2 WLTP	Fuel Economy WLTP	NOx	VRT Rate	Annual Motor Tax	RRP	ROTR
FORMENTOR V1	KMPBNX	Formentor 1.5 TSI 150hp	136 g/km	6.0 l/100km	19.7mg/km	20.00%	€210	€39,925	€40,925
	KMPB5Z	Formentor 1.5 eTSI 150hp DSG	130 g/km	5.8 l/100km	17.9mg/km	17.50%	€200	€43,620	€44,620
	KMPBLZ	Formentor 2.0 TDI 150hp DSG	134 g/km	5.1 l/100km	22.6mg/km	19.25%	€210	€44,880	€45,880
	KMPBOY	Formentor eHYBRID 204hp DSG	32 g/km	0.4 l/100km	7.5mg/km	7.00%	€140	€45,735	€46,735
FORMENTOR V2	KMPBNX	Formentor 1.5 TSI 150hp	139 g/km	6.1 l/100km	19.7mg/km	20.00%	€210	€42,920	€43,920
	KMPB5Z	Formentor 1.5 eTSI 150hp DSG	133 g/km	5.9 l/100km	17.9mg/km	19.25%	€210	€46,605	€47,605
	KMPBLZ	Formentor 2.0 TDI 150hp DSG	135 g/km	5.2 l/100km	22.6mg/km	19.25%	€210	€47,845	€48,845
	KMPBOY	Formentor eHYBRID 204hp DSG	32 g/km	0.4 l/100km	7.5mg/km	7.00%	€140	€48,350	€49,350
VZ	KMPC1Y	Formentor VZ eHYBRID 272hp DSG	36 g/km	1.6 l/100km	5.4mg/km	7.00%	€140	€54,510	€55,510
	KMPC3T	Formentor VZ 2.0TSI 333hp DSG 4WD	198 g/km	8.7 l/100km	18.6mg/km	41.00%	€790	€74,755	€75,755

Optional extras and Irish standard equipment may have an effect on the CO2, NOx and Fuel Economy figures. The CO2, NOx & Fuel Economy figures are the official figures obtained from tests under standardised EU test conditions. Pricing effective as of 01.01.2026. Subject to change.  
 ROTR: Recommended on the road price is RRP including delivery charges of €1,000 as recommended by CUPRA Ireland. Please note every effort has been made to ensure the contents of this publication (including RRP, CO2, fuel consumption and technical information) were accurate and up-to-date at the time of publishing. CUPRA Ireland reserves the right to change specification, prices and withdraw products from sale without notice. Any such alternations will be notified to CUPRA Retailers at the earliest opportunity. Please consult your local CUPRA retailer for the latest product information.



# COLOUR

PREMIUM METALLIC

GRAPHENE GREY

V1 V2 VZ



METALLIC

MAGNETIC TECH

V1 V2 VZ



MIDNIGHT BLACK

V1 V2 VZ



GLACIAL WHITE

V1 V2 VZ



FIORD BLUE

V1 V2 VZ



NON - METALLIC

DARK VOID

V1 V2 VZ



MATT

MAGNETIC TECH MATT

V1 V2 VZ



CENTURY BRONZE MATT

VZ



ENCELADUS GREY MATT

VZ



PAINT

Standard ■  
Optional ■

# WHEELS



SANDSTORM (Z9A)  
19" MACHINED SPORT BLACK / SILVER

V2 V2



SANDSTORM COOPER (Z9E)  
19" MACHINED SPORT BLACK / COPPER

V2 V2



TEMPEST  
18" SILVER ALLOY WHEELS

V1



ARTIC (Z9A)  
19" MACHINED SPORT BLACK / SILVER

V2 V2



ARTIC COPPER (Z9G)  
19" MACHINED SPORT BLACK / COPPER

V2 V2



SONORA  
18" MACHINED SPORT BLACK / SILVER

V2



HAILSTORM (Z9I)  
19" FORGED MACHINED SPORT BLACK / SILVER

V2



HAILSTORM COPPER (R9M)  
19" FORGED MACHINED SPORT BLACK / COPPER

V2

WHEELS

Standard ■  
Optional ■



# INTERIORS

SHARP AMBIENT - AQ



V1 V2

DYNAMIC AMBIENT - CG + PS2



V2 VZ

PROGRESSIVE AMBIENT - KE + PR2



V2 VZ

## STANDARD EQUIPMENT

### FORMENTOR V1

Model	RRP
CUPRA Formentor 1.5 TSI 150hp	€39,925
CUPRA Formentor 1.5e TSI 150hp DSG	€43,620
CUPRA Formentor 2.0TDI 150hp DSG	€44,880
CUPRA Formentor e-hybrid 204hp DSG	€45,735



## EXTERIOR

- TEMPEST 18" Silver Alloy Wheels
- Heat-insulating and tinted rear windows
- Front and rear power windows
- Black roof rails
- Front Full LEDs
- Rear 3D LED lights w/dynamic turn signal & illuminated CUPRA Logo
- Dynamic headlight range control self-adjusting while driving
- Front LED fog lamps with cornering function
- Welcome light in exterior mirrors
- Exterior mirrors, power-folding, adjustable and heated with front passenger exterior mirror lowering function
- Separate daytime running light w/automatic headlight control & coming and leaving home feature
- CUPRA sport suspension

## TECHNOLOGY

- Keyless Go
- 10.25" Digital cockpit
- 12.9" Infotainment System with Illuminated Sliders
- USB-C data sockets (2x Front | 2x Rear)
- 7 Speakers
- Voice Control
- Wireless Android Auto & Apple CarPlay
- DAB Radio
- CUPRA CONNECT
- Wireless Charger
- Start - stop system
- Rain & Light sensor
- Front & Rear Parking Sensors

## INTERIOR

- Multi-function sports steering wheel, heated w/Satellites (DSG only)
- Illuminated CUPRA lettering in door apertures
- Progressive Steering
- Textile sport seats
- CUPRA Drive Profile
- Manually adjustable height and lumbar support for front seats
- Mechanical rear seat release
- Two reading lights up in front and two in the rear
- Climatronic 3 zone air conditioning
- Aluminium Pedals (Automatic Only)
- Black roof cloth
- Auto Dimming Interior Mirror
- Front & Rear Centre Arm Rest

## SAFETY

- XDS electronic differential lock with dynamic traction support
- i-Size and top tether child seat anchors in rear (2) and front passenger seats
- Front Assist w/ Cross traffic Assist
- Lane Assist
- Intelligent Speed Assist
- Traffic Sign Recognition
- Attention & Drowsiness Assist
- Driver & Passenger Airbags
- Side Airbag, Curtain & Interaction Airbag in Front
- Emergency Steering Support & Turn Assist
- 3-point safety belts for front and rear seats, with visual and acoustic reminder
- Adaptive Cruise Control
- High Beam Control
- Tyre Pressure Monitoring System
- Emergency Call

### STANDARD EQUIPMENT FORMENTOR V1

Images are shown for representative purposes only and may contain optional extras.\*Represents a model that has a higher VRT rate based on an upgraded wheel or other additional options





## STANDARD EQUIPMENT

### FORMENTOR V2

(in addition to Formentor V1)

Model	RRP
Formentor 1.5 TSI 150hp	€42,920
Formentor 1.5 eTSI 150hp DSG	€46,605
Formentor 2.0 TDI 150hp DSG	€47,845
Formentor eHYBRID 204hp DSG	€48,350

## EXTERIOR

- SONORA 18" Machined Wheels in Sport Black & silver
- Towing Preparation

## INTERIOR

- Heated Seats in Front
- Smart Interior Wraparound Lighting

## SAFETY

- Electric Tailgate & Virtual Pedal
- Alarm

## TECHNOLOGY

- Rear-View Camera
- Keyless Entry

Images are shown for representative purposes only and may contain optional extras.

**STANDARD  
EQUIPMENT - V2**





## STANDARD EQUIPMENT

### FORMENTOR VZ

(in addition to Formentor V1)

Model	RRP
Formentor VZ eHYBRID 272hp DSG	€54,510
Formentor VZ 2.0 TSI 333hp DA	€74,755

**STANDARD  
EQUIPMENT - VZ**

Images are shown for representative purposes only and may contain optional extras.

### EXTERIOR

- SANDSTORM 19" Machined Alloy Wheels in Sport Black and Silver

### INTERIOR

- Electric Drivers Seat
- Dinamica Bucket Seats
- Electric Tailgate & Virtual Pedal

### SAFETY

- Alarm

### TECHNOLOGY

- DCC - Dynamic chassis control
- Rear View Camera
- Keyless Advanced
- Smart Wraparound Interior Lighting





# E-HYBRID BENEFITS

## GO FURTHER FOR LESS

e-HYBRID can achieve up to 860\* kilometer per full tank of petrol making them more fuel efficient than pure combustion engines.

## BEST OF BOTH WORLDS

Available with our 204 HP & 272 HP e-HYBRID powertrain. Drive in three modes: All electric; pure TSI engine; or a combination of the two.

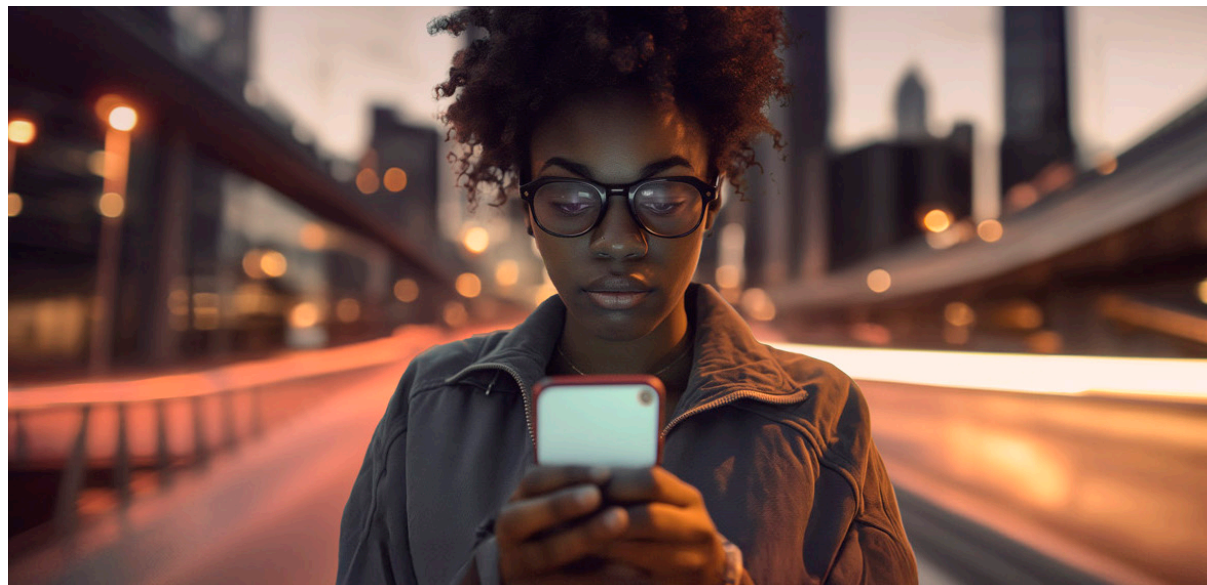
## FREEDOM TO MOVE

An all electric range of up to 126 kilometers allows for emission-free urban driving.

## EFFICIENT AND CONNECTED CHARGING

Charge with either a DC fast-charger or at home with an AC wallbox. Being able to charge from 10-80% on a 50KW fast charger in 26minutes whilst also monitoring activity via your smartphone with CUPRA CONNECT

CUPRA Formentor e-HYBRID comes with a MODE 2 (3-pin) as standard.





# OPTIONAL EQUIPMENT

			FORMENTOR V1	FORMENTOR V2	FORMENTOR VZ	RRP From*
ALLOY WHEELS	SANDSTORM - 19 " wheels Machined in Sport Black/Silver	Z9A	-	◦	•	€596
	SANDSTORM COPPER - 19 "wheels Machined in Sport Black/Copper	Z9E	-	◦	-	€655
			-	-	◦	€482
	ARTIC - 19 "wheels Machined in Sport Black/Silver	Z9C	-	◦	-	€655
			-	-	◦	€362
	ARTIC COPPER- 19 "wheels Machined in Sport Black/Copper	Z9G	-	◦	-	€1,809
			-	-	◦	€1,552
	HAILSTORM- 19 " wheels Forged in Sport Black/Silver	Z9I	-	-	◦	€1,364
	HAILSTORM COPPER - 19 " wheels Forged in Sport Black/Copper	Z9M	-	-	◦	€1,657

			FORMENTOR V1	FORMENTOR V2	FORMENTOR VZ	
INTERIOR	Sharp Ambient	AQ	•	•	-	No Cost
	Dynamic Ambient [Dinamica Bucket Seats, Power Adjustment with Memory for Driver]	CG + PS2	-	◦	•	€971
	Progressive Ambient		-	◦	-	€2,032
	[Leather Bucket Seats, Power Adjustment with Memory for both front Seats]	KE + PR2	-	-	◦	€1,166

			FORMENTOR V1	FORMENTOR V2	FORMENTOR VZ	
PAINT FINISHES	Soft Paint	P	•	•	•	No Cost
	Metallic Paint	M	◦	◦	◦	€969
	Special Paint	C	◦	◦	◦	€1,326
	Matt Paint	T	◦	◦	◦	€2,652

• Standard ◦ Optional - Not Available

\*RRP From is based on the lowest available VRT rate for that model range, adding options to vehicles with higher VRT rates will cause options to increase in cost. Adding optional extras to vehicles can have an impact on the CO<sub>2</sub> & Fuel Consumption of the vehicle. This may in turn change the VRT payable on the vehicle and thus increase the Total Price. Please discuss the addition of options and their impact with your CUPRA Master within our CUPRA Network. Information & pricing subject to change without notice.

# OPTIONAL EQUIPMENT

		FORMENTOR V1	FORMENTOR V2	FORMENTOR VZ	RRP From*	
SPECIAL ITEMS	<b>Immersive by Sennheiser</b> [Requires Emergency Spare Wheel] - 11x Speaker & 1x Subwoofer Premium Sound System	PA1	-	◦	-	€712
		PA2	-	-	◦	
	<b>Pure Performance</b> - Matrix LED Ultra Lights w/Signature & w/Ceremony - Dynamic Chassis Control (Std VZ)	PP1	-	◦	-	€1,788
		PP2	-	-	◦	€1,444
	<b>Intelligent Drive</b> [Only for Manual] - Side & Exit Assist - Pre-Crash Assist - Top View Camera	PF3	-	◦	-	€1,245
	<b>Intelligent Drive</b> [Only for DSG ] - Side & Exit Assist - Pre-Crash Assist - Lane Keeping System Plus, Semi Auto Control in Emergency - Traffic Jam Assist - Top View Camera - Intelligent Park Assist	PF4	-	◦	◦	€1,548
	<b>Skyline</b> - Panoramic Sunroof	PTC	-	◦	◦	€1,300
	Mirrors in Carbon Fibre Black	PFE	-	◦	◦	€785
	Mirrors in Carbon Fibre Copper	PFI	-	◦	◦	€845
	Towing Preparation [Wiring]	PRP	◦	●	◦	€178
	Navigation System	RN4	-	◦	◦	€779
	Emergency Spare Wheel (18") [Not for PHEV]	PG6	◦	◦	◦	€115
	e-Hybrid Mode 3 Charging Cable	***	◦	◦	◦	€320

● Standard ◦ Optional - Not Available

\*RRP From is based on the lowest available VRT rate for that model range, adding options to vehicles with higher VRT rates will cause options to increase in cost. Adding optional extras to vehicles can have an impact on the CO<sub>2</sub> & Fuel Consumption of the vehicle. This may in turn change the VRT payable on the vehicle and thus increase the Total Price. Please discuss the addition of options and their impact with your CUPRA Master within our CUPRA Network. Information & pricing subject to change without notice. \*\*\* This item must be ordered through a Cupra retailer after-sales department.





# CUPRA CONNECT

## FORGET WHERE YOU'VE PARKED?

Simply open the My CUPRA app and you will be able to easily locate your vehicle in cities or large parking areas.

The GPS coordinates will give you the exact address and you are then able to navigate to it through the easy to use map.

## IS MY CAR SECURE?

For those moments when you're unsure if you've locked your car.

Through the My CUPRA app, authorised users can see and control the lock status of the doors and boot.

## DETERMINE YOUR IDEAL TEMPERATURE

On those cold winter mornings, you'll no longer need to sit in your car while you wait for it to warm up and defrost.

With its remote temperature control, you can program the perfect temperature you want when sitting at the wheel, defrosting the windows in the process\*.

## WHEN IS MY SERVICE DUE?

You have enough things in your head to have to remember your next car service.

Activate automatic service scheduling and your chosen authorised service partner will contact you as soon as your vehicle detects the need of a service (inspection or relevant warning light).

## CUPRA CONNECT

CUPRA CONNECT enables access to multiple features and benefits including:

### VEHICLE STATUS

- Driving Data
- Vehicle Health Data

### COMFORT

- Parking Position
- Personalisation

### REMOTE & CONTROL

- Horn & Turn Signals
- Anti-Theft Alert
- Remote Lock & Unlock
- Remote Auxiliary heater

### SAFE & SECURE

- Service scheduling
- Customer care
- Breakdown call

### NAVIGATION\*\*

- Online POI search
- Online destination import
- Online route impact
- Online maps update
- Online traffic information
- Local hazard Information
- Online route calculation
- Dynamic POI (petrol+charging+parking information)

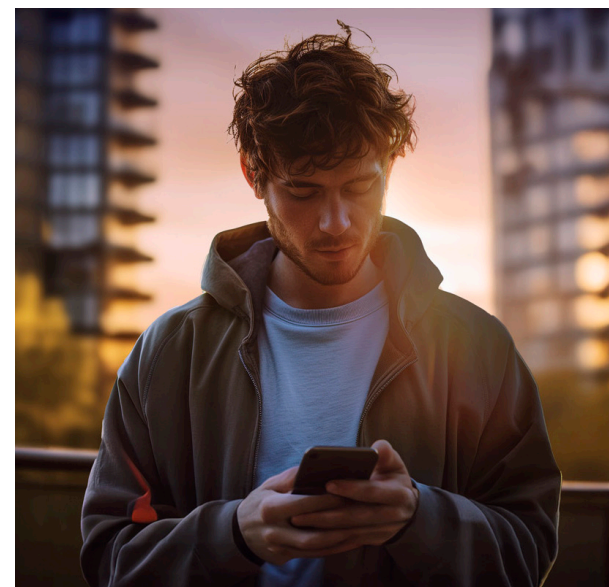
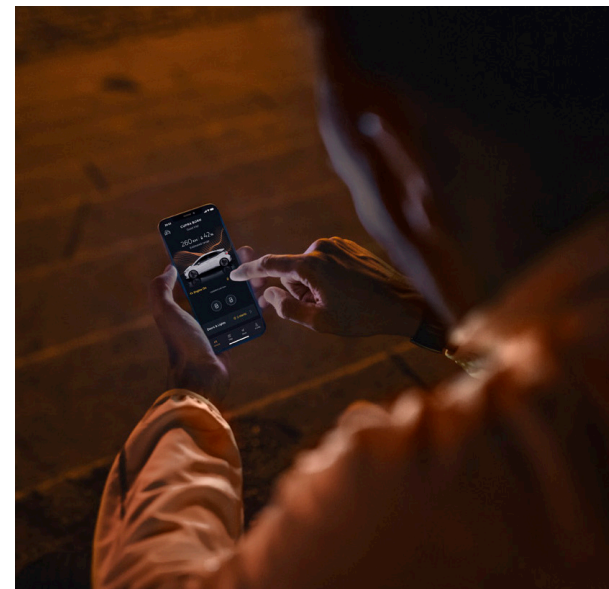
### DOWNLOAD CUPRA APP



APPSTORE



PLAY STORE



\*Feature only available on e-HYBRID and fully electric models. \*\*Only available if Navigation option is fitted.

CUPRA  
CONNECT



# WARRANTIES

## FIVE-YEAR MANUFACTURE WARRANTY

All new CUPRA's registered on or after 01/01/2026 in Ireland, come with a five year/100,000 kilometer warranty, which protects your car against the failure of most mechanical and electrical components due to manufacturing defects. This comprises a two-year manufacturer's warranty with unlimited mileage, plus a further three years up to a maximum of 100,000 kilometer (whichever is soonest).

## THREE-YEAR PAINT WARRANTY

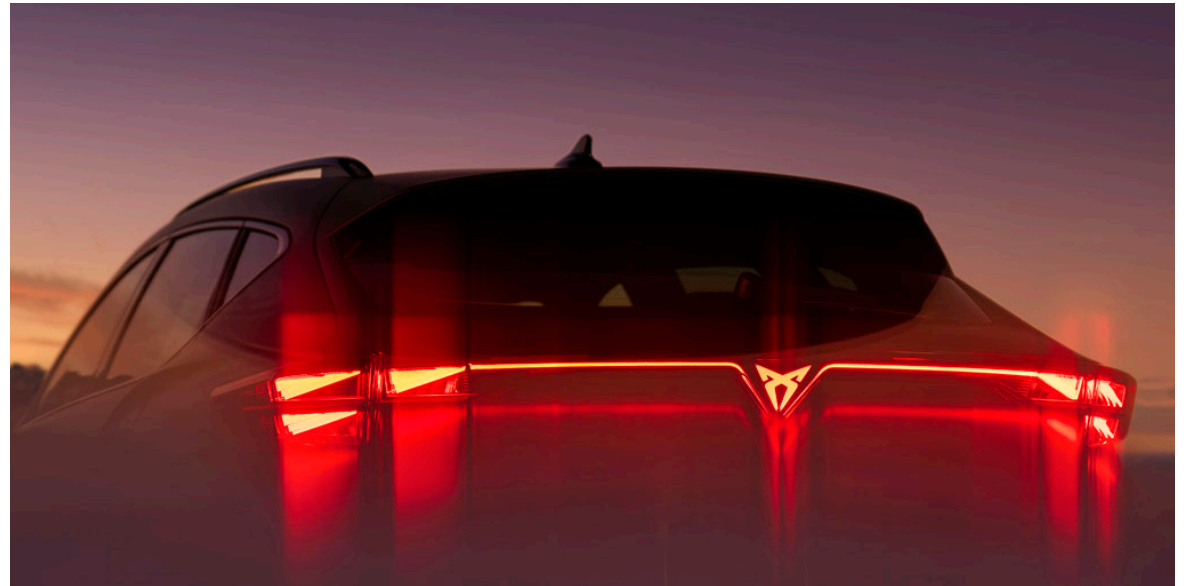
The paintwork of all models featured in this product guide are covered against manufacturing defects for a period of three years. Naturally, the vehicle must be cared for in compliance with the operating instructions which will be found in your vehicle handbook. Please consult your authorised CUPRA Retailer or repairer for full warranty details

## 12-YEAR BODY PROTECTION WARRANTY

The internal body sections and panels of the models featured in this product guide are covered against corrosion originating from internal cavities for 12 years. Naturally, the vehicle must be cared for in compliance with the operating instructions which will be found in your vehicle handbook. Please consult your authorised CUPRA Retailer or repairer for full warranty details.

## CUPRA ROADSIDE ASSISTANCE (INCLUDING EUROPEAN COVER)

Any new CUPRA purchased and registered in the Ireland from an authorised CUPRA Retailer, is covered free by CUPRA Assistance (including European cover) for roadside repairs or recovery to an authorised repairer for the duration of the vehicles warranty. Terms and conditions apply.



## BATTERY WARRANTY\*

The high voltage batteries and named components for plug-In hybrid vehicles (PHEV) are warranted against all defects in materials and workmanship for eight years or up to 160,000 kilometers.

A gradual reduction in battery energy content over time is a normal feature of high voltage battery and does not constitute a warrantable defect. For PHEVs, the battery energy content degradation warranty lasts for eight years or up to 160,000 kilometers, whichever comes first. Where the battery energy content of the high voltage battery is measured by a CUPRA authorised repairer and is found to be less than 70% during the warranty period, then it will be repaired or replaced under warranty subject to conditions. For full details, please go to the CUPRA Ireland website whichever comes first.

## CUPRA PARTS WARRANTY

CUPRA parts and accessories supplied after new vehicle delivery are covered by our 24 months parts warranty

\*Only available on e-HYBRID and fully electric models.



# TECHNICAL SPECIFICATIONS ( KMPBNX, KMPB5Z, KMPBLZ & KMPBOY)

ENGINE		1.5 TSI 150hp (KMPBNX)	1.5 eTSI 150hp DSG (KMPB5Z)	2.0 TDI 150hp DSG (KMPBLZ)	e-Hybrid 204hp DSG (KMPBOY)
	Cylinder/Valve (Total)	4/16	4/16	4/16	4/16
	Displacement (cc)	1498	1498	1968	1498
	Cylinder bore and stroke (mm)	74.5 / 85.9	74.5 / 85.9	81.0/95.5	74.5 / 85.9
	Compression ratio	12	12	16	11.5
	Maximum power (kW (HP)/rpm)	110(150)/5000-6000	110(150)/5000-6000	110(150)/3000-4200	150(204)/4000-6000
	Maximum torque (Nm/rpm)	250/1500-3500	250/1500-3500	360/1600-2750	350/850-4000
	Fuel supply system	TSI Direct Injection	TSI Direct Injection	TSI Direct Injection	TSI Direct Injection
	Aspiration	Turbocharged	Turbocharged	Turbocharged	Turbocharged
	Fuel type	ROZ 95	ROZ 95	DIESEL	Petrol/Electric
PERFORMANCE					
	Maximum speed [km/h]	205	205	205	210
TRANSMISSION					
	Acceleration 0-100 km/h (s)	9.0	9.0	9.0	7.9
ELECTRIC SYSTEM					
	Gearbox type	Manual	DSG (Automatic)	DSG (Automatic)	DSG (Automatic)
	Transmission of drive	Front Wheel Drive	Front Wheel Drive	Front Wheel Drive	Front Wheel Drive
	Battery Capacity [kWh]	-	-	-	25.8 (20 net)
	Battery Type	-	-	-	Li-ion
	Electric Range [km]	-	-	-	126
	Charging Time (AC 11kW) 0-100% SoC	-	-	-	2 hrs 30 mins
WEIGHTS & DIMENSIONS					
	Charging Time (DC 50kW) 10-80% SoC	-	-	-	26 mins
	Length / Width / Height [mm]	4451/1839/1520	4451/1839/1520	4451/1839/1520	4451/1839/1537
	Wheelbase [mm]	2679	2679	2679	2679
	Boot capacity [l]	450	450	450	345
	Fuel tank capacity [l]	50	50	50	40
	Max allowable weight [kg]	1960	2000	2000	2190
	Max towing weight (unbraked) [kg]	710	740	740	750
	Max towing weight (braked - 12%) [kg]	1500	1500	1500	1700

# TECHNICAL SPECIFICATIONS - VZ (KMPC1Y & KMPC3T)

## ENGINE

	VZ e-Hybrid 272hp DSG (KMPC1Y)	VZ 2.0 TSI 333hp DA (KMPC3T)
Cylinder/Valve (Total)	4/16	4/16
Displacement (cc)	1498	1984
Cylinder bore and stroke (mm)	74.5 / 85.9	82.5
Compression ratio	11.5	92.8
Maximum power (kW (HP)/rpm)	200(272)/4750-6500	245(333)/5600-6500
Maximum torque (Nm/rpm)	400/850-4750	420/2100-5500
Fuel supply system	TSI Direct Injection	TSI Direct Injection
Aspiration	Turbocharged	Turbocharged
Fuel type	Petrol/Electric	ROZ95

## PERFORMANCE

Maximum speed [km/h]	220	250
Acceleration 0-100 km/h (s)	7.2	4.8

## TRANSMISSION

Gearbox type	DSG (Automatic)	DSG (Automatic)
Transmission of drive	Front Wheel Drive	4 Wheel Drive

## ELECTRIC SYSTEM

Battery Capacity [kWh]	25.8 (20 net)	-
Battery Type	Li-ion	-
Electric Range [km]	118	-
Charging Time (AC 11kW) 0-100% SoC	2 hrs 30 mins	-
Charging Time (DC 50kW) 10-80% SoC	26 mins	-

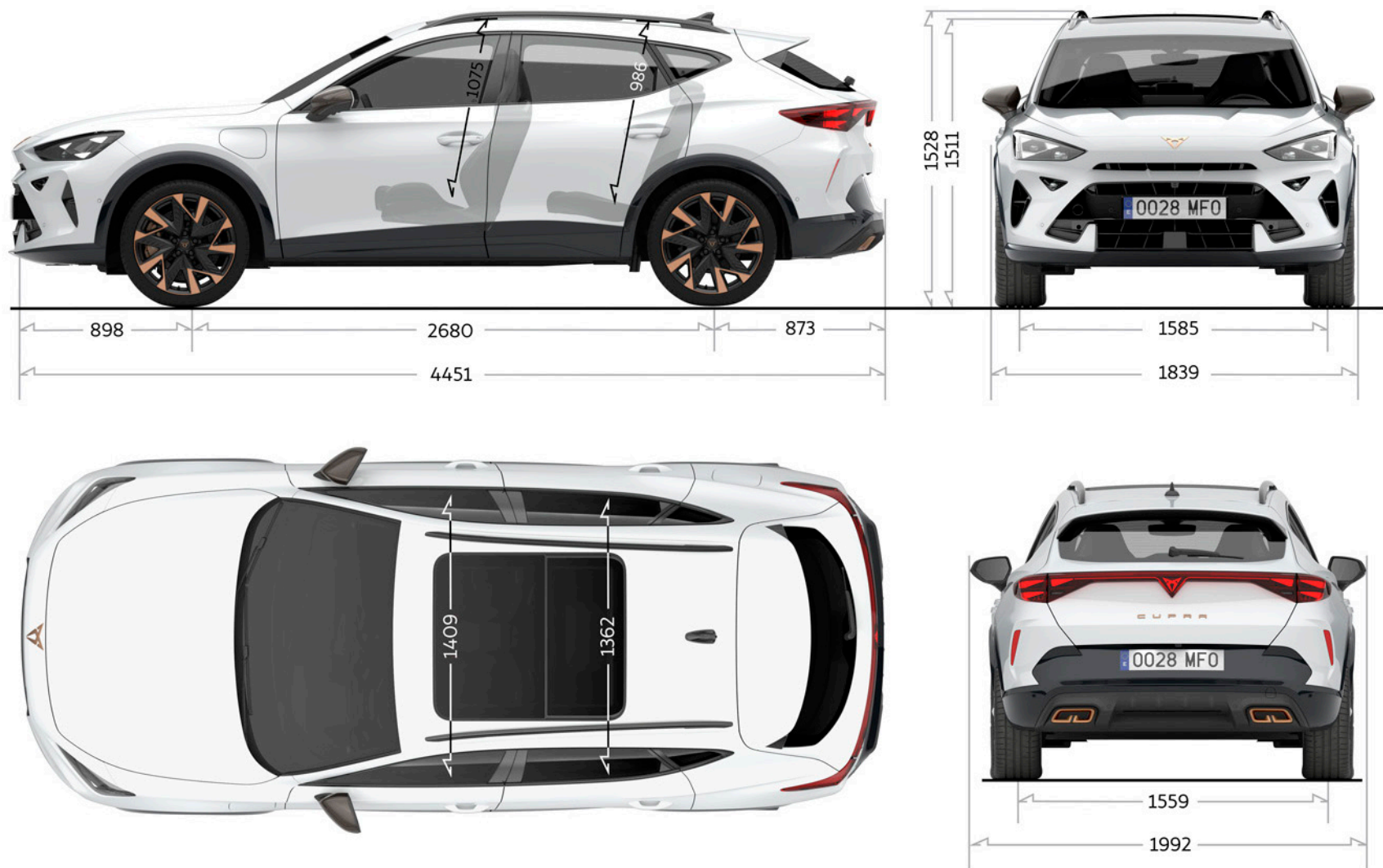
## WEIGHTS & DIMENSIONS

Length / Width / Height [mm]	4451/1839/1537	4451/1839/1511
Wheelbase [mm]	2679	2679
Boot capacity [l]	345	420
Fuel tank capacity [l]	40	50
Max allowable weight [kg]	2200	2160
Max towing weight (unbraked) [kg]	750	750
Max towing weight (braked - 12%) [kg]	1700	1700



# TECHNICAL SPECIFICATIONS

## Dimensional Drawing





**EXPLORE**

**FIND A RETAILER**

**TEST DRIVE**

**FINANCE OFFERS**

**CONFIGURE**

CUPRA is committed to a policy of continuous product development and reserves the right to make changes to specifications, colours and prices without notice. The information in this product guide can therefore be given as guidance only. While CUPRA makes every effort to ensure that specifications are accurate at the time of publication, you should always check with your authorised CUPRA Partner for the latest information. Due to limitations of the printing process the colours reproduced in this guide may vary slightly from the actual paint colours and material.